

Investment Committee
Friday, October 7, 2022, 9:00 a.m.
Retirement and Investment Conference Room (Virtual)
Video Teleconferencing:
1600 E Century Ave, Suite 3, Bismarck, ND 58507
[Click here to join the meeting](#)

AGENDA

- I. **CALL TO ORDER AND ACCEPTANCE OF AGENDA**
- II. **ACKNOWLEDGEMENT OF APPOINTED CHAIR & VICE-CHAIR AND INTRODUCTION OF MEMBERS**
- III. **GOVERNANCE FOR GROWTH – MR. ANDERSON**
- IV. **INVESTMENT COMMITTEE CHARTER AND ACTIVITIES – MR. ANDERSON**
- V. **INVESTMENT ACTIVITIES TO DATE 2022 – MR. ANDERSON**
- VI. **DISCUSSION**
- VII. **ADJOURNMENT**



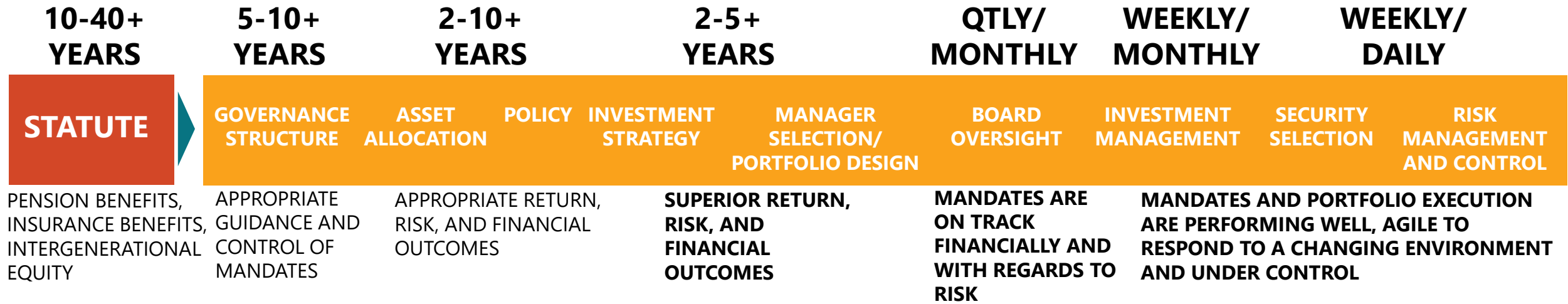
GOVERNANCE FOR GROWTH

Scott M Anderson, CFA
October 7, 2022

NORTH
Dakota
Be Legendary.

Retirement & Investment

TIME HORIZON OF DECISION MAKING



- GOOD GOVERNANCE REQUIRES THE TIME HORIZON AND FREQUENCY OF DECISIONS TO MATCH THE TIMELINE REQUIRED TO ACHIEVE A GOAL (AGILITY ↔ STABILITY)
- GOOD GOVERNANCE REQUIRES OVERSIGHT TO BE INDEPENDENT OF DECISIONS AND THEIR IMPLEMENTATION
- PERFORMANCE AND RISK MANAGEMENT REQUIRE SHORT TIME HORIZONS TO BE AGILE TO CHANGING ENVIRONMENTS, DISCIPLINE NOT TO ACT TOO FREQUENTLY, AND CONTINGENT PLANNING

GOVERNANCE MODEL – ROLES & RESPONSIBILITIES

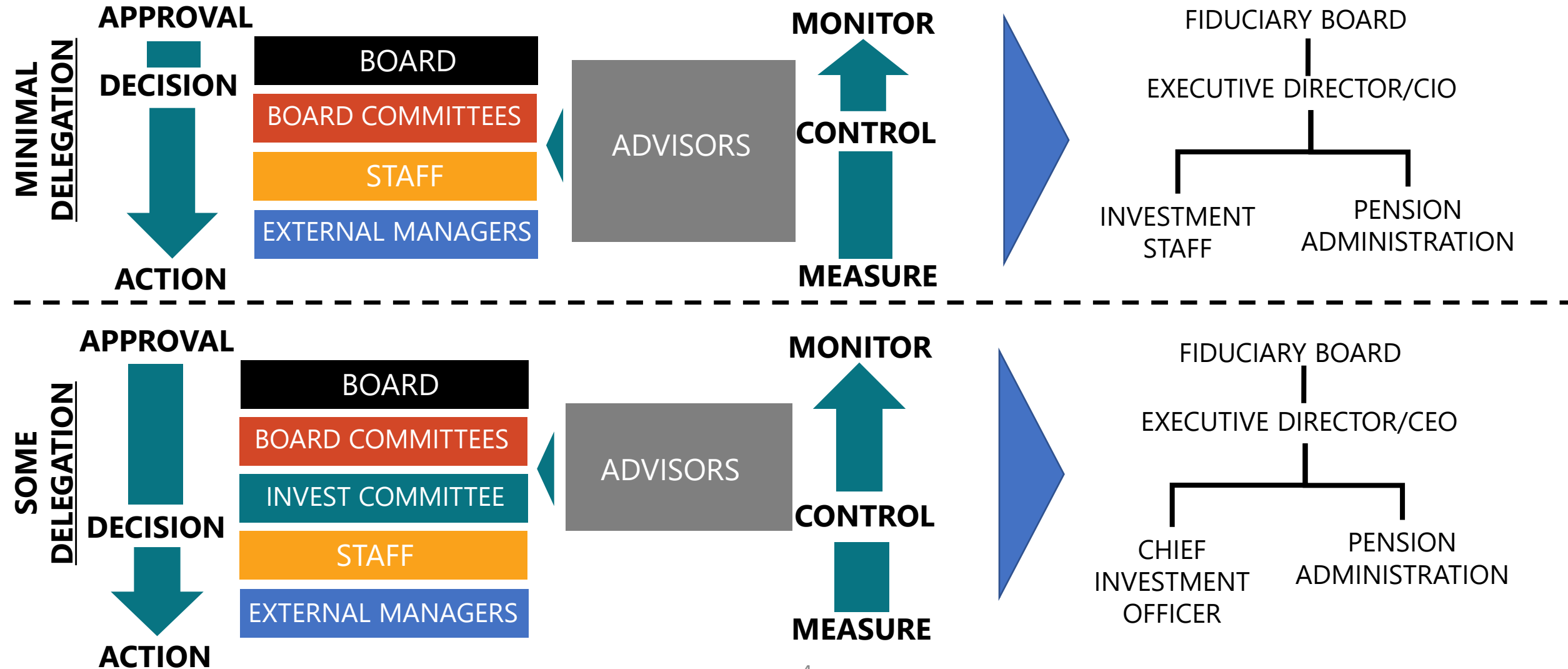
MINIMAL DELEGATION – CURRENT MODEL



SOME DELEGATED AUTHORITY



GOVERNANCE MODEL – DELEGATION



ILLUSTRATION

SOME DELEGATED AUTHORITY



BENEFITS OF SOME DELEGATION

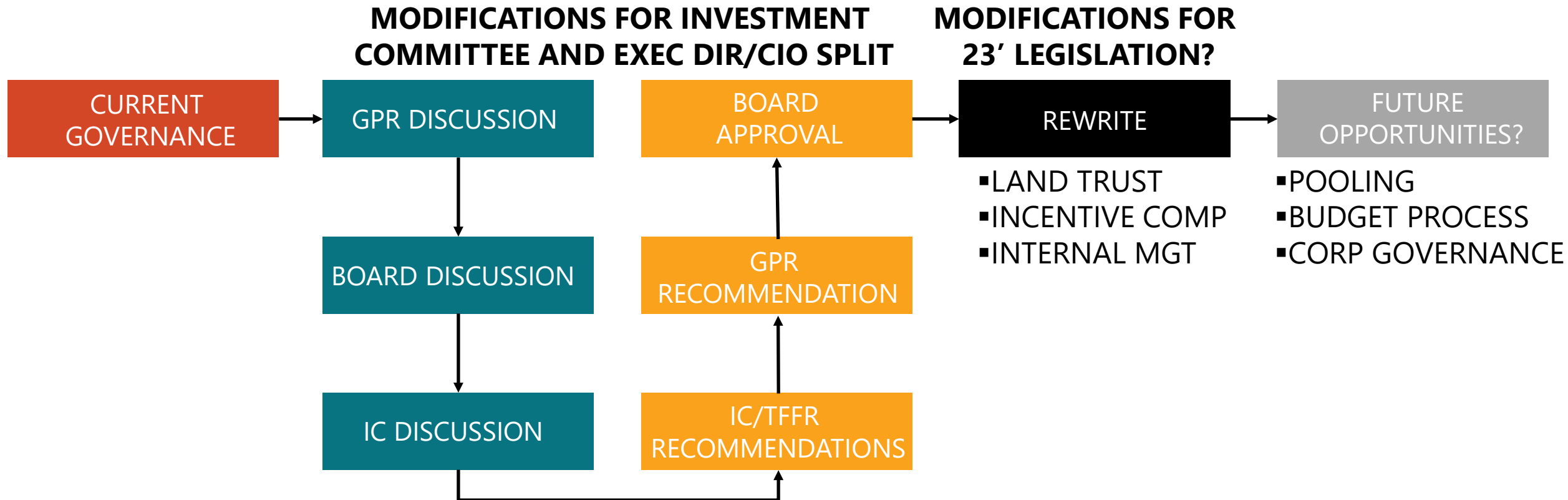
- AGILITY TO RESPOND TO A FAST-CHANGING ENVIRONMENT
- STABILITY FROM GOVERNANCE LAYERS
- MORE SUBSTANTIAL AND TECHNICAL CONVERSATIONS TO ENABLE MORE SOPHISTICATED STRATEGIES
- INDEPENDENCE OF OVERSIGHT AND POLICY FROM DECISION MAKING AND EXECUTION
- BETTER ENDS ACHIEVEMENT AT A LOWER COST

STATE INVESTMENT BOARD GOVERNANCE MANUAL

TABLE OF CONTENTS

- A. EXECUTIVE LIMITATIONS
- B. GOVERNANCE PROCESS
- C. BOARD-STAFF RELATIONSHIP
- D. ENDS
- E. INVESTMENTS
- F. TFFR PROGRAM
- G. TRUST FUND INVESTMENT GUIDELINES
- H. BY-LAWS
- I. CENTURY CODE

NEAR TERM MODIFICATIONS/ POST LEGISLATIVE SESSION MODIFICATIONS



MODIFICATIONS FOR INVESTMENT COMMITTEE AND

E. FIDUCIARY DUTIES

E. INVESTMENT PROCESS

E. ENTITIES/RESPONSIBILITIES

E. PROXY VOTING

E. EVALUATION

E. EXHIBITS

CONSIDERATION FOR LEGACY FUND

E.2 – INVESTMENT PROCESS DIAGRAM;

E.3 – INCLUDE IC; CLARIFY DELEGATION AND ROLES

E.7 – CLARIFY

E.10, 11, 13 – REFLECTS INVESTMENT COMMITTEE EXISTANCE

E. EXHIBITS - UPDATE EXHIBITS

**NORTH DAKOTA
RETIREMENT AND INVESTMENT OFFICE**

**STATE INVESTMENT BOARD
GOVERNANCE MANUAL**

1600 EAST CENTURY AVENUE, STE. 3
P.O. BOX 7100
BISMARCK, ND 58507-7100
TELEPHONE: 701/328-9885

TABLE OF CONTENTS

- A. EXECUTIVE LIMITATIONS
- B. GOVERNANCE PROCESS
- C. BOARD-STAFF RELATIONSHIP
- D. ENDS
- E. INVESTMENTS
- F. TFFR PROGRAM
- G. TRUST FUND INVESTMENT GUIDELINES
- H. BY-LAWS
- I. CENTURY CODE

A. EXECUTIVE LIMITATIONS

	<u>PAGE</u>
General Executive Constraint	A-1
Staff Relations	A-2
Relating to Public and Government.....	A-3
Budgeting	A-4
Financial Condition.....	A-5
Communication and Counsel to the Board	A-6
Asset Protection	A-7
Compensation and Benefits	A-8
Conflict of Interest	A-9
Code of Conduct	A-10
Unrelated Business Interests	A-11

EXHIBITS

<i>Annual Affirmation of Conflict of Interest Policy.....</i>	<i>A-I</i>
---	------------

POLICY TYPE: EXECUTIVE LIMITATIONS

POLICY TITLE: *GENERAL EXECUTIVE CONSTRAINT*

The executive director shall not knowingly cause or allow any practice, activity, decision, or organizational circumstance which is either imprudent or in violation of commonly accepted business and professional ethics, state law, rules, and policies.

1. With respect to treatment of staff, the executive director shall not knowingly cause or allow any condition or any communication which is unfair, undignified, or disrespectful.
2. In relating to the public and other governmental entities, the executive director may not knowingly cause or allow any action which is unfair, undignified, or disrespectful. In addition, the executive director may not allow any communications from the staff which are inaccurate or fail to distinguish between fact and personal opinion.
3. Budgeting for any fiscal year or the remaining part of any fiscal year shall not knowingly deviate materially from board *Ends* priorities, or create fiscal jeopardy, or fail to be derived from the biennial planning calendar.
4. With respect to the actual, ongoing condition of the organization's financial health, the executive director may not cause or allow the development of fiscal jeopardy or a material deviation of actual expenditures from board priorities established in *Ends* policies.
5. With respect to providing information and counsel to the board, the executive director may not permit the board to be uninformed.
6. The executive director may not allow assets to be unprotected, inadequately maintained, nor unnecessarily risked.
7. Compensation and benefits for staff shall not deviate from applicable state and federal law, including N.D. Administrative Code, Chapter 4-07-02.
8. In order to protect the board from sudden loss of executive services, the executive director may not have fewer than three other executives familiar with board and chief executive issues and processes. The executive director shall not fail to inform the Deputy Executive Director, the Deputy Chief Investment Officer, and the Chief Financial Officer of executive and board issues and processes.
9. The executive director will not allow a conflict of interest in the procurement of goods and services.
10. The executive director will not operate the office without a code of conduct for all RIO Employees. This code of conduct will be a part of the office Administrative Policy Manual.

Policy Implemented: July 23, 1995.

Amended: January 22, 1999; November 19, 1999; September 26, 2014.

POLICY TYPE: EXECUTIVE LIMITATIONS

POLICY TITLE: *STAFF RELATIONS*

With respect to treatment of staff, the executive director shall not cause or allow any condition or any communication which is unfair, undignified, or disrespectful.

Accordingly, the executive director may not:

1. Operate without personnel procedures which clarify personnel rules for staff, provide for effective handling of grievances, and protect against wrongful conditions or violate any state or federal law.
2. Fail to provide staff with the opportunity to complete an employment termination questionnaire and an exit interview with the Supervisor of Audit Services.

Policy Implemented: June 23, 1995.

Amended: May 31, 1996; September 26, 2014.

POLICY TYPE: EXECUTIVE LIMITATIONS

POLICY TITLE: RELATING TO PUBLIC AND GOVERNMENT

In relating to the public and other governmental entities, the executive director may not cause or allow any action which is unfair, undignified, or disrespectful. In addition, the executive director may not allow any communications from the staff which is inaccurate or fails to distinguish between fact and personal opinion.

Policy Implemented: June 23, 1995.

POLICY TYPE: EXECUTIVE LIMITATIONS

POLICY TITLE: *BUDGETING*

Budgeting for any fiscal year or the remaining part of any fiscal year shall not deviate materially from board *Ends* priorities, or create fiscal jeopardy.

Accordingly, the executive director may not cause or allow budgeting which:

1. Contains too little information to enable credible projection of expenses, cash flow, and disclosure of planning assumptions.
2. Plans the expenditure in any fiscal year of more funds than are authorized by legislative appropriation.
3. Reduces the level of service, or anticipates a reduction in the level of service, of any Retirement and Investment Office program without the prior approval of the State Investment Board.

Policy Implemented: June 23, 1995.

Amended: November 2, 1997; June 26, 1998.

POLICY TYPE: EXECUTIVE LIMITATIONS

POLICY TITLE: FINANCIAL CONDITION

With respect to the actual, ongoing condition of the organization's financial health, the executive director may not cause or allow the development of fiscal jeopardy or a material deviation of actual expenditures from board priorities established in *Ends* policies.

Accordingly, the executive director may not:

1. Make any expenditure that exceeds the appropriation authority authorized by the North Dakota legislature.
2. Create policies for payment of administrative obligations that are in conflict with the policies of the Office of Management and Budget.
3. Initiate a transfer of appropriation authority between budget line items without board and Emergency Commission approval.
4. Allow appropriation expenditures to be made unless reported on PeopleSoft.

Policy Implemented: June 23, 1995.

Amended: September 26, 2014.

POLICY TYPE: EXECUTIVE LIMITATIONS

POLICY TITLE: COMMUNICATION AND COUNSEL TO THE BOARD

With respect to providing information and counsel to the board, the executive director may not permit the board to be uninformed.

Accordingly, the executive director may not:

1. Neglect to submit monitoring data required by the board (see policy on Monitoring Executive Performance) in a timely, accurate, and understandable fashion, directly addressing provisions of the board policies being monitored.
2. Let the board be unaware of relevant trends, anticipated adverse media coverage, material external and internal changes, and particularly changes in the assumptions upon which any board policy has previously been established.
3. Fail to advise the board if, in the executive director's opinion, the board is not in compliance with its own policies on *Governance Process* and *Board-Staff Relationship*, particularly in the case of board behavior which is detrimental to the work relationship between the board and the executive director.
4. Fail to marshal for the board as many staff and external points of view, issues, and options as needed for fully informed board choices.
5. Present information in unnecessarily complex or lengthy form.
6. Fail to provide a mechanism for official board, officer, or committee communications.
7. Fail to deal with the board as a whole except when (a) fulfilling individual requests for information or (b) responding to officers or committees duly charged by the board.
8. Fail to report in a timely manner an actual or anticipated noncompliance with any policy of the board, particularly *Ends* and *Executive Limitations*.
9. Fail to inform the board in a timely manner of any intention to hire or dismiss the Deputy Executive Director, the Deputy Chief Investment Officer, or the Chief Financial Officer.
10. Fail to keep the board informed concerning the delegation of fiduciary authority to any staff member. Every person to whom such fiduciary responsibility is delegated is ultimately accountable to the board as to the exercise and execution of the delegated authority.

Policy Implemented: June 23, 1995; November 19, 1999.

Amended: September 26, 2014.

POLICY TYPE: EXECUTIVE LIMITATIONS

POLICY TITLE: *ASSET PROTECTION*

The executive director may not allow assets to be unprotected, inadequately maintained, nor unnecessarily risked.

Accordingly, the executive director may not:

1. Fail to insure against theft and casualty losses to at least 80 percent replacement value and against liability losses to board members, staff, or the organization itself in an amount greater than the average for comparable organizations.
2. Allow non-bonded personnel access to funds.
3. Subject plant and equipment to improper wear and tear or insufficient maintenance.
4. Unnecessarily expose the organization, its board, or staff to claims of liability.
5. Fail to protect intellectual property, information, and files from loss or significant damage.
6. Receive, process, or disburse funds under controls which are insufficient to meet the state auditor's standards.
7. Invest or hold operating capital in a manner that is inconsistent with state law or board policy.
8. Acquire, encumber, or dispose of real property.
9. Endanger the organization's public image or credibility, particularly in ways that would hinder its accomplishment of mission.
10. Deviate from the investment process set by the State Investment Board (SIB) as contained in the board's policy on investments.

Policy Implemented: June 23, 1995.

POLICY TYPE: EXECUTIVE LIMITATIONS

POLICY TITLE: *COMPENSATION AND BENEFITS*

Compensation and benefits for staff shall not deviate from applicable state and federal law, including N.D. Administrative Code, Chapter 4-07-02.

Accordingly, the executive director may not:

1. Change the compensation and benefits of any program officer reporting directly to the SIB.
2. Promise or imply permanent or guaranteed employment.

Policy Implemented: June 23, 1995.

Amended: January 22, 1999; November 19, 1999.

POLICY TYPE: EXECUTIVE LIMITATIONS

POLICY TITLE: *CONFLICT OF INTEREST*

Conflicts of interest and the appearance of impropriety shall be avoided by the executive director. The executive director must not allow family, social, professional, or other relationships to influence their judgment in discharging their responsibilities. The executive director must refrain from financial and business dealings that tend to reflect adversely on their duties. If a conflict of interest unavoidably arises, the executive director shall immediately disclose the conflict to the SIB. Conflicts of interest to be avoided include, but are not limited to: receiving consideration for advice given to a person concerning any matter over which the executive director has any direct or indirect control, acting as an agent or attorney for a person in a transaction involving the board, and participation in any transaction for which the executive director has acquired information unavailable to the general public, through their position.

"Conflict of Interest" means a situation in which a board member or staff member has a direct and substantial personal or financial interest in a matter which also involves the member's fiduciary responsibility.

The executive director will be required to affirm their understanding of this policy annually, in writing, and must disclose any conflicts of interest that may arise (See Exhibit A-I).

Policy Implemented: June 23, 1995.

Amended: January 22, 1999; February 25, 2011.

POLICY TYPE: EXECUTIVE LIMITATIONS

POLICY TITLE: CODE OF CONDUCT

The executive director will not operate the office without a code of conduct for all RIO employees. This code of conduct shall be a part of the office Administrative Policy Manual.

Policy Implemented: June 27, 1997.

POLICY TYPE: EXECUTIVE LIMITATIONS

POLICY TITLE: *UNRELATED BUSINESS INTERESTS*

In the pursuit of personal business interests, the Executive Director will not allow a situation to exist that presents a conflict of interest to the SIB investment program, nor shall such activity be in violation of RIO Administrative Policy, Use of Office Facilities and Equipment.

Policy Implemented: August 18, 2000

Memorandum

To: RIO Executive Director/CIO

From: RIO Compliance Officer

Date: July 1, 20--

RE: Annual Affirmation of Conflict of Interest Policy

Executive Limitations Policy A-9, *Conflict of Interest*, which is attached to this memorandum, details the conflict of interest policy for the executive director. This policy also indicates that the executive director is required to reaffirm their understanding of this policy annually and disclose any conflicts of interest. Therefore, please read and sign the statement below to comply with this requirement.

“I have read and understand SIB Executive Limitations Policy A-9, *Conflict of Interest*. I have disclosed any conflicts of interest as required by this policy.”

Name (printed) _____

Signature _____

Date _____

Detail of any conflicts of interest (if any):

B. GOVERNANCE PROCESS

	<u>PAGE</u>
Governance Commitment.....	B-1
Governing Style	B-2
Board Job Description.....	B-3
Chairperson's Role	B-4
Board Committee Principles	B-5
Standing Committees	B-6
Annual Board Planning Cycle	B-7
Board Members' Code of Conduct	B-8
Administration of Fiduciary Authority.....	B-9
Policy Introduction/Amendment/Passage.....	B-10

EXHIBITS

<i>Annual Affirmation of Code of Conduct Policy.....</i>	<i>B-I</i>
--	------------

POLICY TYPE: GOVERNANCE PROCESS

POLICY TITLE: GOVERNANCE COMMITMENT

The board, on behalf of benefit recipients and the other clients, who have entrusted their funds to us, will:

- Lead the North Dakota Retirement and Investment Office (RIO) with a strategic perspective.
- Rigorously attend to its investment and oversight role.
- Continually improve its capability as a body to define values and vision.

Policy Implemented: June 23, 1995.

The board will strive to govern with an emphasis on:

- Outward vision rather than an internal preoccupation.
- Encouragement of diversity in viewpoints.
- Strategic leadership more than administrative detail.
- Clear distinction of board and executive director roles.
- Collective rather than individual decisions.
- Future rather than past or present.
- Proactivity rather than reactivity.

The board will:

1. Cultivate a sense of group responsibility. The board, not the staff, will be responsible for excellence in governing. The board will strive to be an initiator of policy, not merely a reactor to staff initiatives. The board will strive to use the expertise of individual members to enhance the ability of the board as a body, rather than to substitute the individual judgments for the board's values.
2. Direct, control, and inspire the organization through the careful establishment of the broadest written policies reflecting the board's values and perspectives. The board's major focus will be on the intended long-term impacts outside the operating organization (*Ends*), not on the administrative or programmatic means of attaining those effects.
3. Enforce upon itself whatever discipline is needed to govern with excellence. Discipline will apply to matters such as attendance, policy-making principles, respect of roles, and ensuring the continuity of governance capability.
4. After speaking with one voice, self-police any tendency to stray from adopted board governance policies. The board will not allow any officer, member, or committee of the board to hinder or be an excuse for not fulfilling its commitments. The board respects the right of any member, as an individual, to publicly disagree with an adopted board policy. Board members will accurately portray board policies and decisions.
5. Promote continual board development through orientation and mentoring of new members in the board's governance process and through periodic board discussion of process improvement. The board shall not delegate new member governance orientation to the executive director or any staff member.
 - A. Board mentors are encouraged to assist new members to understand their fiduciary duty and role. Board members may engage the Board Chair if they would like to participate in an optional board mentorship program.

POLICY TYPE: GOVERNANCE PROCESS

POLICY TITLE: *GOVERNING STYLE*

- B. The new board member should read and study Chapter 21-10, North Dakota Century Code (Section J of the SIB Policy Governance Manual which governs the activities of the boards represented on the SIB: Teachers' Fund for Retirement Board, Public Employees Retirement Systems Board, and the State Investment Board).
- C. The board should receive a glossary of terms used by the retirement and pension fund industry; i.e. Callan Associates Inc. - Glossary of Terms.
- D. Newly appointed or elected board members should become familiar with the Carver Model of Governance, since the SIB directs its activities by this model. They should read Boards That Make a Difference and study the policy manuals that have been developed by the SIB and TFFR Board.
- E. The board members must understand their roles as trustees and fiduciaries, the Prudent Investor Rule, and Procedural Prudence.

A "new trustee book bag" containing the Retirement and Investment Office's Comprehensive Annual Financial Report (CAFR) and reference materials relating to board governance, fiduciary conduct, and investment management concepts and terminology and other appropriate materials will be made available to new trustees.

- F. The executive director will provide the SIB with a list of periodicals available which would provide current information on pension issues. The board members will review and request subscriptions to appropriate periodicals.
- 6. Monitor and regularly discuss the board's process and performance. Self-monitoring will include comparison of board activity and discipline to policies in the *Governance Process* and *Board-Staff Relationship* categories.
 - 7. Observe Robert's Rules except where the board has superseded them.

Policy Implemented: June 23, 1995.

Amended: June 28, 1996; November 19, 1999, January 26, 2001, February 27, 2015, October 26, 2018, September 27, 2019.

POLICY TYPE: GOVERNANCE PROCESS

POLICY TITLE: BOARD JOB DESCRIPTION

The function of the board is to make certain contributions that lead RIO toward the desired performance and ensure that it occurs. The board's specific contributions are unique to its trusteeship role and necessary for proper governance and management.

Consequently, the "products" or contributions of the board shall be:

1. The link between the SIB, its investment clients, and benefit recipients.
2. Written governing policies that, at the broadest levels, address:
 - A. *Ends*: Organizational products, impacts, benefits, outcomes, recipients, and their relative worth (what good for which needs at what cost).
 - B. *Executive Limitations*: Constraints on executive authority which establish the prudence and ethics boundaries within which all executive activity and decisions must take place.
 - C. *Governance Process*: Specification of how the board conceives, carries out, and monitors its own task.
 - D. *Board-Executive Director Relationship*: How authority is delegated and its proper use monitored: the executive director's role, authority, and accountability.
3. The assurance of executive director performance against above policies 2a and 2b.
4. Legislation necessary to achieve the board's *Ends*.

Policy Implemented: June 23, 1995.

POLICY TYPE: GOVERNANCE PROCESS

POLICY TITLE: CHAIRPERSON'S ROLE

The chairperson's primary responsibility is to ~~insure~~ensure the integrity of the board's process. The chairperson is the only board member authorized to speak for the board other than in specifically authorized instances.

1. The duty of the chairperson is to see that the board operates consistent with state law, administrative rules, and its own policies.
 - A. The board agenda will be the responsibility and be coordinated by the chairperson.
 - B. Meeting discussion content will only be those issues which, according to board policy, clearly belong to the board and not the executive director, or in a board member's opinion, may deal with fiduciary responsibilities.
 - C. Deliberation will be fair, open, and thorough, but also efficient, timely, orderly, and brief.
 - D. The chairperson shall appoint a parliamentarian.
2. The authority of the chairperson consists in making decisions that fall within the topics covered by board policies on *Governance Process* and *Board-Executive Director Relationship*, except where the board specifically delegates portions of this authority to others. The chairperson is authorized to use any reasonable interpretation of the provisions in these policies.
 - A. The chairperson is empowered to chair board meetings with all the commonly accepted authority of that position (e.g., ruling, recognizing).
 - B. The chairperson has no authority to make decisions about policies created by the board within *Ends* and *Executive Limitations* policy areas. Therefore, the chairperson has no authority to supervise or direct the executive director.
 - C. The chairperson may represent the board to outside parties in announcing board-stated positions and in stating chairperson decisions and interpretations within the area delegated to the chairperson.
 - D. The chairperson is authorized, in consultation with the RIO Executive Director, to grant approval for international travel by SIB members and to keep the board informed on travel requests.
 - E. The chairperson is authorized, in consultation with the RIO Executive Director, to grant approval for domestic due diligence visits by SIB members and it shall be the responsibility of the traveling board member to report to the SIB on the results of the due diligence visits.

Policy Implemented: June 23, 1995.

Amended: August 17, 2001, September 25, 2009.

POLICY TYPE: GOVERNANCE PROCESS

POLICY TITLE: *BOARD COMMITTEE PRINCIPLES*

Unless specifically provided by governance policy, board committees will be assigned ~~se-as~~ to minimally interfere with the wholeness of the board's job and so as never to interfere with delegation from board to executive director. Board committees will be used sparingly.

1. Board committees are to help the board do its job, not to help the staff do its job. Committees ordinarily will assist the board by preparing policy alternatives and implications for board deliberation. Board committees are created to advise the board, not the staff. The Investment Committee is a hybrid committee comprised of Board members, Staff and external investment experts. The investment committee is delegated authority as provided by Board policy.
2. Board committees may not speak or act for the board except when formally given such authority for specific and time-limited purposes. Expectations and authority will be carefully stated in order not to conflict with authority delegated to the executive director.
3. Board committees cannot exercise authority over staff however committees will make requests of staff through the executive director unless staff is assigned to the committee. Because the executive director works for the full board, he or she will not be required to obtain approval of a board committee before an executive action. In keeping with the board's broader focus, board committees will normally not have direct dealings with current staff operations.
4. Board committees are to avoid over-identification with the committee's assignment. Therefore, a board committee which has helped the board create policy will not be used to monitor organizational performance on that policy. The Investment Committee is chartered to monitor certain investment strategy execution and investment performance in a more detailed way than the Board which receives independent performance appraisals and summarized updates on investment activities. The Board is the ultimate governance authority of the investment program.
5. This policy applies only to committees which are formed by board action, whether or not the committees include non-board members. It does not apply to committees formed under the authority of the executive director.
6. The chairperson will appoint board committees authorized by the board. The operational life span of a board committee will be defined at the time of appointment.

Policy Implemented: June 23, 1995.

Amended: November 22, 1996, February 27, 2015

POLICY TYPE: GOVERNANCE PROCESS

POLICY TITLE: STANDING COMMITTEES

The board's standing committees are set forth in this policy as follows:

1. Audit Committee
2. Securities Litigation Committee
3. Executive Review and Compensation Committee
4. Governance and Policy Review Committee
5. Investment Committee

- A. The Audit Committee, Securities Litigation Committee, Executive Review and Compensation Committee, the Governance and Policy Review Committee, and the Investment Committee shall operate under the terms of a charter approved by the board.

INTRODUCTION – Audit Committee

An Audit Committee has been established as a standing committee of the State Investment Board (SIB). The Audit Committee will assist the SIB in carrying out its oversight responsibilities as they relate to the Retirement and Investment Office (RIO) internal and external audit programs, including financial and other reporting practices, internal controls, and compliance with laws, regulations, and ethics.

The primary objective of the internal audit function is to assist the SIB and management in the effective discharge of their responsibilities. To this end, internal auditing will furnish them with analyses, appraisals, recommendations, and pertinent information concerning the activities reviewed.

Functions and units within RIO will be reviewed at appropriate intervals to determine whether they are effectively carrying out their responsibilities of planning, organizing, directing, and controlling in accordance with SIB and management instructions, applicable laws, policies, and procedures, and in a manner consistent with both the RIO objectives and high standards of administrative practice.

POLICY OF THE STATE INVESTMENT BOARD – Audit Committee

The audit staff shall have full, free, and unrestricted access to all RIO activities, records, property, and personnel relative to the subject under review. The audit function will be conducted in a manner consistent with acceptable professional standards and coordinated with others to best achieve the audit objectives and the RIO objectives.

The Internal Audit Services Unit is responsible for developing and directing a broad, comprehensive program of internal auditing within RIO. The Internal Audit Services Unit will report administratively to management and functionally to the Audit Committee of the SIB.

The RIO unit supervisors are responsible for seeing that corrective action on reported weaknesses is either planned or taken within 30 days from the receipt of a report disclosing those weaknesses if known or applicable. The unit supervisors are also responsible for seeing that a written report of action planned or completed is sent to the executive director. If a plan for action is reported, a second report shall be made promptly upon completion of the plan.

INTRODUCTION – Securities Litigation Committee

A Securities Litigation Committee (SLC) has been established as a standing committee of the State Investment Board (SIB). The SLC will assist the SIB in fulfilling its fiduciary oversight responsibilities of monitoring the investment assets entrusted to it by the various statutory and contracted funds, and to serve as a communications link for the SIB, RIO's management and staff, third party securities litigation firms, and others.

POLICY TYPE: GOVERNANCE PROCESS

POLICY TITLE: STANDING COMMITTEES

The SLC will determine when an active role should be pursued in regard to securities litigation affecting investments within the SIB's portfolios based on the SIB approved Securities Litigation Policy and approved SIB Securities Litigation Committee Charter.

POLICY OF THE STATE INVESTMENT BOARD – Securities Litigation Committee

The SLC is authorized to:

- Draft policy (to be formally approved by SIB) regarding dollar and/or risk thresholds for determining when to opt-out of class actions and/or seek direct litigation or lead plaintiff status;
- Based on SIB approved policy make decisions on the level of participation the SIB will take in direct litigation, opt-in or group litigation, anti-trust and other class actions; and
- Approve the selection of special assistant attorneys (in conjunction with the approval of the Office of the Attorney General) in cases of direct litigation.

RIO's management is responsible for ongoing monitoring of securities litigation and claims filing. RIO management and staff will enable the SLC to provide a periodic update to the SIB on the SLC's activities and related recommendations.

The SLC has the responsibility to provide oversight in the areas of:

- policy development;
- determination on direct litigation and/or lead plaintiff status; and
- approval of special assistant attorneys (outside counsel) with concurrence of the Attorney General.

INTRODUCTION – Executive Review and Compensation Committee

An Executive Review and Compensation Committee (ERCC) has been established as a standing committee of the SIB. The ERCC will assist the SIB in fulfilling its fiduciary oversight responsibilities of “monitoring executive performance (which) is synonymous with monitoring organizational performance against board policies on *Ends* and *Executive Limitations*”. The ERCC will also assist the SIB in developing compensation goals and strategies for the agency as a whole that are in alignment with the strategic plan of the agency. The Chief Financial Officer- Chief Operating Officer (CFO-COO) will be responsible for the preparation of all committee materials with the exception of internal survey and audit materials. Internal audit will be responsible for preparing an annual summary of the required reports submitted to the SIB by the Executive Director and Chief Investment Officer in connection with its review of policy adherence to *Ends* and *Executive Limitations*. Internal audit will also assist the ERC in completing annual surveys of the Executive Director with the SIB, SIB clients, and RIO team members, and Executive Director and Deputy Executive Director- Chief Retirement Officer with the TFFR Board, TFFR stakeholders, and RIO team members.

The ERCC will conduct a formal evaluation of the Executive Director, and survey's regarding the performance of the Chief Investment Officer, and Deputy Executive Director – Chief Retirement Officer during the first half of every calendar year. This formal evaluation by the ERCC will serve as the basis for an annual compensation recommendation for the Executive Director only to be reviewed and approved by the SIB on or before June 30th each year. The survey results for all three positions will be reported to both the SIB and TFFR Board. Internal audit will also assist the SIB and ERC in administering the annual board self-assessment process.

POLICY TYPE: GOVERNANCE PROCESS

POLICY TITLE: *STANDING COMMITTEES*

POLICY OF THE STATE INVESTMENT BOARD – Executive Review and Compensation Committee

The ERCC is authorized to:

- Conduct a formal evaluation of the Executive Director annually;
- Obtain SIB approval of the annual performance evaluation of the Executive Director;
- Obtain performance surveys of the Chief Investment Officer and Deputy Executive Director-Chief Retirement Officer;
- Make a compensation recommendation for the Executive Director to the SIB on or before June 30th of each year;
- Administer a formal self-assessment of the SIB periodically (unless instructed otherwise)
- Review and make recommendations regarding RIO's compensation policy to ensure RIO can recruit and retain superior talent to satisfy the core mission and strategic plan of the agency; and
- Conduct or procure a new peer compensation study or survey at least every three years to assess the current level of RIO staff compensation and recommend policy changes to address target salary ranges as appropriate.

The ERCC and/or RIO will seek SIB approval prior to formally engaging any third-party assistance in conducting the annual executive review process or board self-assessment.

INTRODUCTION – Governance & Policy Review

A Governance and Policy Review Committee has been established as a standing committee of the SIB. The Governance and Policy Review Committee will assist the SIB in fulfilling its fiduciary oversight responsibilities to fulfill its responsibilities regarding matters that relate to governing the SIB, policies, and identifying and making recommendations to the SIB.

The Governance and Policy Review Committee will be responsible for reviewing the governance manual, recommending policy changes, and when directed by the board review governance specific concerns, and make recommendations for improvement.

POLICY OF THE STATE INVESTMENT BOARD – Governance & Policy Review Committee

The Governance & Policy Review Committee is authorized to:

- Review and recommend policies for the governance manual.
- Ensure the governance manual reflects best practices and good governance.
- As directed by the board, review specific governance concerns, and make recommendations for improvement.
- Request RIO staff for specific topic training or education

INTRODUCTION – Investment Committee

The Investment Committee (the “Committee”) is created to provide oversight of SIB investments within the parameters established by the SIB. Oversight will include an analysis of risk and return at the portfolio, asset class, and client fund levels. Additionally, the Committee will provide input to the Board on asset allocation and benchmark recommendations.

In general, the Committee will focus on various policies and procedures of the agency to ensure they are consistent with industry standards and that they continue to keep pace with prudent investment theory and practice.

The Committee will review decisions made about deviations from established benchmarks and allocation of investments among internal management (if approved) and external management, including decisions about passive, active and quantitative styles.

POLICY OF THE STATE INVESTMENT BOARD – Investment Committee

The Investment Committee is authorized to:

- propose to the SIB changes to its Investment Policy including delegation of investment authority to RIO investment staff;
- approve the SIB Investment Committee Investment Guidelines (IC Guidelines);
- approve the general strategies for each investment division; and
- approve new investment instruments.

Policy Implemented: June 23, 1995.

Policy Amended: April 27, 2018, September 27, 2019, February 25, 2022, July 22, 2022.

POLICY TYPE: GOVERNANCE PROCESS

POLICY TITLE: ANNUAL BOARD PLANNING CYCLE

To accomplish its job outputs with a governance style consistent with board policies, the board will strive to follow a biennial agenda which (a) completes a re-exploration of *Ends* policies annually and (b) continually improves its performance through attention to board education and to enriched input and deliberation.

1. A biennial calendar will be developed.
 2. The cycle will conclude each year on the last day of June in order that administrative budgeting can be based on accomplishing a one-year segment of the most recent board long-range vision.
 - A. In the first three months of the new cycle, the board will strive to develop its agenda for the ensuing one-year period.
 - B. Scheduled monitoring will be used to evaluate and adjust the annual agenda as needed.
 3. Education, input, and deliberation will receive paramount attention in structuring the series of meetings and other board activities during the year.
 - A. To the extent feasible, the board will strive to identify those areas of education and input needed to increase the level of wisdom and forethought it can give to subsequent choices.
 - B. A board education plan will be developed during July and August of each year.
 4. The sequence derived from this process for the board planning year ending June 30 is as follows:
 - A. July: Election of officers, appoints audit and investment committee, plan annual agenda, begin to develop board education plan, and new board member orientation.
 - B. August: Present education plan and continue new board member orientation.
 - C. September: Annual Review of Governance Manual.
 - D. October: Chief Investment Officer review of investment results. Annual meeting for evaluation of RIO vs. *Ends* policies and annual board evaluation.
 - E. November: Chief Investment Officer report on investment work plan.
 - F. January: During second year of the biennium, begin to develop *Ends* policies for the coming biennium for budget purposes.
 - G. February: Chief Investment Officer present the investment work plan. Evaluation of Executive Director.
 - H. March: Chief Investment Officer review of investment results and report on investment work plan. During first year of biennium, set budget guidelines for budget development.
-

POLICY TYPE: GOVERNANCE PROCESS

I. June: Chief Investment Officer review of investment results and report on investment work plan

4. ~~The sequence derived from this process for the board planning year ending June 30 is as follows:~~
- ~~A. July: Election of officers, appoints audit committee, plan annual agenda, begin to develop board education plan, and new board member orientation.~~
 - ~~B. August: Investment Director review of investment results, establish investment work plan, add investment education to education plan, and continue new board member orientation.~~
 - ~~C. September: Annual Review of Governance Manual.~~
 - ~~D. October: Annual meeting for evaluation of RIO vs. *Ends* policies and annual board evaluation.~~
 - ~~E. November: Investment Director report on investment work plan.~~
 - ~~F. January: During second year of the biennium, begin to develop *Ends* policies for the coming biennium for budget purposes.~~
 - ~~G. February: Investment Director report on investment work plan. Evaluation of Executive Director.~~
 - ~~H. March: During first year of biennium, set budget guidelines for budget development.~~
 - ~~I. May: Investment Director report on investment work plan.~~

Policy Implemented: June 23, 1995; November 19, 1999.

Amended: September 26, 2014, February 27, 2015.

POLICY TYPE: GOVERNANCE PROCESS

POLICY TITLE: BOARD MEMBERS' CODE OF CONDUCT

The following will be the Code of Ethical Responsibility for the SIB:

1. SIB members owe a duty to conduct themselves ~~so as~~ to inspire the confidence, respect, and trust of the SIB members and to strive to avoid not only professional impropriety but also the appearance of impropriety.
2. SIB members should perform the duties of their offices impartially and diligently. SIB members are expected to fulfill their responsibilities in accord with the intent of all applicable laws and regulations and to refrain from any form of dishonest or unethical conduct. Board members should be unswayed by partisan interest, public sentiment, or fear of criticism.
3. Conflicts of interest and the appearance of impropriety shall be avoided by SIB members. Board members must not allow their family, social, professional, or other relationships to influence their judgment in discharging their responsibilities. Board members must refrain from financial and business dealings that tend to reflect adversely on their duties. If a conflict of interest unavoidably arises, the board member shall immediately disclose the conflict to the SIB. A board member must abstain in those situations where the board member is faced with taking some official action regarding property or a contract in which the board member has a personal interest. Conflicts of interest to be avoided include but are not limited to: receiving consideration for advice over which the board member has any direct or indirect control, acting as an agent or attorney for a person in a transaction involving the board, and participation in any transaction involving for which the board member has acquired information unavailable to the general public, through participation on the board.

“Conflict of Interest” means a situation in which a board member or staff member has a direct and substantial personal or financial interest in a matter with also involves the member’s fiduciary responsibility.

4. The board should not unnecessarily retain consultants. The hiring of consultants shall be based on merit, avoiding nepotism and preference based upon considerations other than merit that may occur for any reason, including prior working relationships. The compensation of such consultants shall not exceed the fair value of services rendered.
5. Board members must abide by North Dakota Century code 21-10-09, which reads: “No member, officer, agent, or employee of the state investment board shall profit in any manner from transactions on behalf of the funds. Any person violating any of the provisions of this section shall be guilty of a Class A misdemeanor.”
6. Board members shall perform their respective duties in a manner that satisfies their fiduciary responsibilities.
7. All activities and transactions performed on behalf of public pension funds must be for the exclusive purpose of providing benefits to plan participants and defraying reasonable expenses of administering the plan.

POLICY TYPE: GOVERNANCE PROCESS

POLICY TITLE: BOARD MEMBERS' CODE OF CONDUCT

8. Prohibited transactions. Prohibited transactions are those involving self-dealing. Self-dealing refers to the fiduciary's use of plan assets or material, non-public information for personal gain; engaging in transactions on behalf of parties whose interests are adverse to the plan; or receiving personal consideration in connection with any planned transaction.
9. Violation of these rules may result in an official reprimand from the SIB. No reprimand may be issued until the board member or employee has had the opportunity to be heard by the board.
10. Board Members are required to affirm their understanding of this policy annually, in writing, and must disclose any conflicts of interest that may arise (See Exhibit B-I).

Policy Implemented: June 23, 1995.

Amended: January 22, 1999, February 25, 2011, January 27, 2012, February 27, 2015.

POLICY TYPE: GOVERNANCE PROCESS

POLICY TITLE: ADMINISTRATION OF FIDUCIARY AUTHORITY

The board is responsible for:

1. Proper exercise of fiduciary investment authority by RIO.
2. The determination of policies.
3. The investment and disposition of property held in a fiduciary capacity.
4. The direction and review of the actions of all officers, employees, and committees in the exercise of the board's delegated fiduciary authority.

Policy Implemented: June 23, 1995.

POLICY TYPE: GOVERNANCE PROCESS

POLICY TITLE: POLICY INTRODUCTION/AMENDMENT/PASSAGE

New policies or policy amendments may be proposed by the Executive Director or a Board member. All new policies or amendments may be submitted to the Board's Legal Counsel for drafting in the approved style.

Upon request of the Executive Director or a Board member a new policy or amendment shall be placed on the Board's agenda for action as follows:

1. Introduction and first reading. A brief explanation or summary of the new policy or amendment shall be presented to the Board. Upon approval of introduction and first reading, the measure shall be placed on the agenda of the next scheduled meeting of the Board for second reading and adoption. When appropriate, the measure shall be distributed to interested parties.
2. *Second reading and adoption. Interested parties and the public shall be allowed an opportunity to comment on the policy or amendment before final action by the Board. The measure shall take effect immediately following second reading and adoption by the Board, unless a different effective date is stated.*
3. Amendments. Amendments may be proposed at any time before final adoption of the measure. Upon determination by the Board that adoption of an amendment constitutes a substantive change that significantly changes the meaning or effect of the measure, the Board shall continue consideration of second reading and adoption to the next meeting to permit further review and comment.

Emergency measures. The Board may, upon determination that an emergency or other circumstances calling for expeditious action exists, waive the requirement of a second reading and immediately approve the new policy or amendment following introduction and first reading.

Policy Implemented: February 27, 2009

Policy Revised: November 18, 2016

Memorandum

To: State Investment Board

From: RIO Compliance Officer

Date: July 1, 20--

RE: Annual Affirmation of Code of Conduct Policy

Governance Process Policy B-8, *Board Members' Code of Conduct*, which is attached to this memorandum, details the Code of Ethical Responsibility for the SIB. Item #10 of this policy indicates that each Board Member is required to reaffirm their understanding of this policy annually and disclose any conflicts of interest. Therefore, please read and sign the statement below to comply with this requirement.

"I have read and understand SIB Governance Process Policy B-8 *Board Members' Code of Conduct*. I have disclosed any conflicts of interest as required by this policy."

Name (printed) _____

Signature _____

Date _____

Detail of any conflicts of interest (if any):

C. BOARD-STAFF RELATIONSHIP

	<u>PAGE</u>
Chief Executive Role	C-1
Delegation to the Executive Director	C-2
Executive Director Job Description.....	C-3
Monitoring Executive Performance.....	C-4

POLICY TYPE: BOARD-STAFF RELATIONSHIP

POLICY TITLE: *CHIEF EXECUTIVE ROLE*

The executive director, as chief executive officer, is accountable to the board acting as a body. The board will instruct the executive director through these written policies, delegating to the executive director the implementation and administration of these policies.

Policy Implemented: June 23, 1995.

POLICY TYPE: BOARD-STAFF RELATIONSHIP

POLICY TITLE: DELEGATION TO THE EXECUTIVE DIRECTOR

All board authority delegated to staff is delegated through the executive director.

1. The board authority will direct the executive director to achieve specified results, for specified recipients, at a specified cost through the establishment of *Ends* policies. The board will limit the latitude the Executive Director may exercise in practices, methods, conduct, and other “means” to the *Ends* through establishment of *Executive Limitations* policies.
2. The Executive Director must use reasonable judgment in the implementation or administration of the board’s *Ends* and *Executive Limitations* policies; the executive director is authorized to establish practices, and develop activities.
3. The board may change its *Ends* and *Executive Limitations* policies. By so doing, the board changes the latitude of choice given to the Executive Director. If any particular delegation is in place, the board and its members will respect and support the Executive Director’s choices, provided that the Executive Director’s choice is consistent with the board’s fiduciary responsibility.
4. Only decisions of the board acting as the body are binding upon the Executive Director.
 - a. Decisions or instructions of individual board members, officers, or committees are not binding on the Executive Director except in rare instances when the board has specifically authorized such exercise of authority.
 - b. In the case of board members or committees requesting information, other than a public record, or assistance without board authorization, the Executive Director may refuse such requests that require a material amount of staff time or funds or is disruptive.
5. The Executive Director will be responsible for the hiring, termination, and annual evaluation of all employees of the Retirement and Investment Office.

Policy Implemented: June 23, 1995.

Amended: November 22, 1996; November 19, 1999.

POLICY TYPE: BOARD-STAFF RELATIONSHIP

POLICY TITLE: EXECUTIVE DIRECTOR JOB DESCRIPTION

As the board's single official link to the operating organization, the executive director's performance will be ~~considered to be~~ synonymous with the RIO's total performance.

Consequently, the executive director's job contributions can be stated as performance in the following areas:

1. Organizational accomplishment of the provisions of board policies on *Ends*.
2. Organizational operation within the boundaries of prudence and ethics established in board policies on *Executive Limitations*.
3. Maintain accurate records of the proceedings of the SIB and TFFR Board.

Policy Implemented: June 23, 1995.

POLICY TYPE: BOARD-STAFF RELATIONSHIP

POLICY TITLE: MONITORING EXECUTIVE PERFORMANCE

Monitoring executive performance is synonymous with monitoring organizational performance against board policies on *Ends* and on *Executive Limitations*. Any evaluation of the executive director's performance, formal or informal, may be derived only from these monitoring data.

1. The purpose of monitoring is simply to determine the degree to which board policies are being fulfilled. Information which does not do this will not ~~be considered to~~ be monitoring. Only a minimum amount of board time as necessary will be devoted toward monitoring so that meetings can best be used to create the future rather than to review the past.
2. A given policy may be monitored in one or more of three ways:
 - A. Internal report: Disclosure of compliance information to the board from the executive director.
 - B. External report: Discovery of compliance information by a disinterested, external auditor, inspector or judge who is selected by and reports directly to the board. Such reports must assess executive performance only against policies of the board, not those of the external party unless the board has previously indicated that party's opinion to be the standard.
 - C. Direct board inspection: Discovery of compliance information by a board member, a committee, or the board as a whole. This is a board inspection of documents, activities, or circumstances directed by the board which allows a "prudent person" test of policy compliance.
3. The board will monitor each *Ends* and *Executive Limitations* policy according to the following frequency and method:

Quarterly internal reports for policies:

- A-2 Staff Relations
- A-4 Budgeting
- A-5 Financial Condition
- D-3 Investment Services
- D-4 Investment Performance

Annual external reports for policies:

- A-2 Staff Relations
- A-4 Budgeting
- A-7 Asset Protection
- D-3 Investment Services
- D-4 Investment Performance

POLICY TYPE: BOARD-STAFF RELATIONSHIP

POLICY TITLE: MONITORING EXECUTIVE PERFORMANCE

Annual internal reports for policies:

- A-1 General Executive Constraint
- A-3 Relating to Public and Government
- A-8 Compensation and Benefits
- A-9 Conflict of Interest

4. The Executive Director will submit required monitoring reports at regular meetings of the board. The board will act on those reports by voting on one of the following motions:
 - A. A motion to accept the report.
 - B. A motion to conditionally accept the report, with a statement of the revisions or additional information that is necessary for the report to be accepted without condition.

The internal audit staff will be responsible for preparing an annual summary of the board's action concerning required reports submitted by the Executive Director, and the summary will be made available as a part of the formal evaluation of the Executive Director.

5. Each March the board will conduct a formal evaluation of the executive director/investment officer. This evaluation will be based on accomplishments of *Ends* and *Compliance with Executive Limitations*.
6. At the February board meeting, the chairperson will appoint a three-member committee to review the board's evaluation and make a recommendation to the full board concerning salary for the executive director/investment officer.

In making its recommendation, the committee will consider job performance as evidenced by the annual summary of the periodic monitoring reports, the Retirement and Investment Office budget status, the annual Public Pension System's Compensation Survey, the annual National Association of State Investment Officer's survey, the legislature's approved salary increases for state employees, the North Dakota market compensation for comparable positions, and other data or information considered relevant by the committee.

The committee's recommendation will be placed on the May board meeting agenda for possible action by the board. Final action by the board will be accomplished no later than the June board meeting.

Policy Implemented: June 23, 1995

Amended: November 21, 1997; June 25, 1999; November 19, 1999; January 28, 2000; February 25, 2000; February 23, 2001; September 26, 2014.

D. ENDS

	<u>PAGE</u>
Mission.....	D-1
Organizational Beneficiaries.....	D-2
Investment Services	D-3
Information on Available Services	D-4
Retirement Services	D-5
Information on Retirement Services.....	D-6
Customer Satisfaction	D-7

EXHIBITS

<i>Organizational Beneficiaries</i>	<i>D-I</i>
<i>Monitoring Summary</i>	<i>D-II</i>

The Retirement and Investment Office exists in order that:

- SIB clients receive investment returns, consistent with their written investment policies and market variables, in a cost effective manner and under the Prudent Investor Rule.
- Potential SIB clients have access to information regarding the investment services provided by the SIB .
- TFFR benefit recipients receive their retirement benefits in a cost effective and timely manner.
- TFFR members have access to information which will allow them to become knowledgeable about the issues and process of retirement.
- SIB clients and TFFR benefit recipients receive satisfactory services from the boards and staff of the office.

Policy Implemented: October 27, 1995.

Amended: January 27, 2012.

POLICY TYPE: ENDS

POLICY TITLE: ORGANIZATIONAL BENEFICIARIES

RIO beneficiaries (clients) are those which are statutorily defined and those which have contracted for services under statutory authority. Exhibit D-I lists the organizational beneficiaries.

Policy Implemented: October 27, 1995.

The Retirement and Investment Office exists in order that:

1. SIB clients receive investment returns, consistent with their written investment policies and market variables, in a cost-effective manner and under the Prudent Investor Rule.
 - A. This “End” will be evaluated based on the following:
 1. Comparison of client fund’s rate of return NET of fees and expenses, to that of the client’s policy benchmark over a minimum evaluation period of 5 years.
 2. Comparison of the client fund’s risk, measured by standard deviation of NET returns, to that of the client’s policy benchmark over a minimum evaluation period of 5 years.
 3. Comparison of the risk adjusted performance of the client fund, NET of fees and expenses, to that of the client’s policy benchmark over a minimum evaluation period of 5 years.

Policy Implemented: October 27, 1995.

Amended: November 22, 1996, January 27, 2012.

POLICY TYPE: ENDS

POLICY TITLE: INFORMATION ON AVAILABLE SERVICES

The Retirement and Investment Office exists in order that:

1. Potential SIB clients have access to information regarding the investment services provided by the SIB.

Policy Implemented: October 27, 1995.

POLICY TYPE: ENDS

POLICY TITLE: RETIREMENT SERVICES

The Retirement and Investment Office exists in order that:

1. TFFR benefit recipients receive their retirement benefits in a cost-effective and timely manner.
 - A. Retirement program performance quality will be measured against the *Ends* and retirement policies and administrative rules adopted by the Teachers' Fund for Retirement Board.

Policy Implemented: October 27, 1995.

POLICY TYPE: ENDS

POLICY TITLE: *INFORMATION ON RETIREMENT SERVICES*

The Retirement and Investment Office exists in order that:

1. TFFR members have access to information which will allow them to become knowledgeable about the issues and process of retirement.

Policy Implemented: October 27, 1995.

POLICY TYPE: ENDS

POLICY TITLE: CUSTOMER SATISFACTION

The Retirement and Investment Office exists in order that:

1. SIB clients and TFFR benefit recipients receive satisfactory services from the boards and staff of the office.
 - A. The quality of services will be assured by direct board contact and by surveying clients and beneficiaries at least annually and promptly addressing identified client/beneficiary concerns.

Policy Implemented: December 1, 1995.

ORGANIZATIONAL BENEFICIARIES

INVESTMENT CLIENTS:

Statutory:

1. Budget Stabilization Fund
2. Cultural Endowment Fund
3. Insurance Regulatory Trust Fund
4. Petroleum Tank Release Compensation Fund
5. Public Employees Retirement System Fund
6. Risk Management Fund
7. State Bonding Fund
8. State Fire and Tornado Fund
9. Teachers' Fund for Retirement
10. The Legacy Fund
11. Workforce Safety & Insurance Fund

Contractual:

1. City of Bismarck Deferred Sick Leave Fund
2. City of Bismarck Employees Retirement Fund
3. City of Bismarck Police Retirement Fund
4. City of Fargo Dome Permanent Fund
5. City of Grand Forks Park District Pension Fund
6. City of Grand Forks Pension Fund
7. ND Association of Counties Fund
8. ND Job Service Retirement Fund
9. Public Employees Retirement System Group Health Insurance Fund
10. Public Employees Retirement System Retiree Health Insurance Fund
11. ND State Board of Medicine
12. Tobacco Prevention and Control Fund
13. ND Parks and Recreation
14. ND Office of the Attorney General
15. Veterans' Cemetery Trust Fund

ADMINISTRATIVE CLIENTS:

Statutory:

1. Teachers' Fund for Retirement Beneficiaries

EXHIBIT D-II

GOVERNANCE POLICY MONITORING SUMMARY				
POLICY	METHOD	RESPONSIBILITY	FREQUENCY	BOARD ACTION
ENDS				
Investment Services	External	Investment Consultant	Annual - FYE	N/A
	Internal	Investment Officer	Quarterly	Accept or Follow-Up
Retirement Services	External	Actuary	Annual - FYE	N/A
	Internal	Retirement Officer	Quarterly	Accept or Follow-Up
EXECUTIVE DIRECTOR LIMITATIONS				
Executive Constraint	Internal	Executive Director	Annual - CYE	Accept or Follow-Up
	Internal	Audit Supervisor	Quarterly	Accept or Follow-Up
Staff Relations	Internal	Executive Director	Quarterly	Accept or Follow-Up
	Internal (External)	Audit Supervisor (SIB)	Annual - CYE	Accept or Follow-Up
Public Relations	Internal	Executive Director	Annual - CYE	Accept or Follow-Up
	Internal	Audit Supervisor	Annual - CYE	Accept or Follow-Up
Budgeting	Direct	Board Review	Biennial	Accept or Follow-Up
	External	Governor (State Auditor)	Annual - FYE	N/A
	Internal	Executive Director	Quarterly	Accept or Follow-Up
Financial Condition	External	External Auditor	Annual - FYE	Accept or Follow-Up
	Internal	Executive Director	Quarterly	Accept or Follow-Up
Board Communication	Direct Board Participation	State Investment Board	Annual - CYE	Accept or Follow-Up
Asset Protection	External	External Auditor	Annual - FYE	N/A
	Internal	Executive Director	Annual - CYE	Accept or Follow-Up
Compensation and Benefits	Internal	Executive Director	Annual - CYE	Accept or Follow-Up
	Internal	Audit Supervisor	Annual - CYE	Accept or Follow-Up
Conflict of Interest	Internal	Executive Director	Annual - CYE	Accept or Follow-Up
	Internal	Audit Supervisor	Annual - CYE	Accept or Follow-Up
Code of Conduct	Internal	Executive Director	Annual - CYE	Accept or Follow-Up
	Internal	Audit Supervisor	Annual - CYE	Accept or Follow-Up
Unrelated Business Interests	Internal	Executive Director	Annual - CYE	Accept or Follow-Up
	Internal	Audit Supervisor	Annual - CYE	Accept or Follow-Up

Audit Supervisor = Report to State Investment Board Audit Committee with a Summary Report to the SIB
 FYE = Fiscal Year End CYE = Calendar Year End N/A = Not Applicable *Amended September 26, 2014*

E. INVESTMENTS

	<u>PAGE</u>
Fiduciary Duties	E-1
Investment Process.....	E-2
Key Program Entities and Responsibilities	E-3
Investment Policy Dev. - Trust Funds	E-4
Investment Policy Dev. - Investment Pools.....	E-5
Monitoring.....	E-6
Proxy Voting	E-7
Implementation - Investment Mgr. Selection	E-8
Implementation - Portfolio Rebalancing	E-9
Evaluation	E-10
Performance Related Investment Manager Review	E-11
Bank of North Dakota Match Loan Program	E-12
Accepting New Clients	E-13
Securities Monitoring and Litigation	E-14

EXHIBITS

<i>Listing of Trust Funds</i>	<i>E-I</i>
-------------------------------------	------------

POLICY TYPE: INVESTMENTS

POLICY TITLE: FIDUCIARY DUTIES

By virtue of the responsibilities assigned to the SIB by North Dakota Century Code Chapter 21-10, the members of the SIB are fiduciaries for eleven statutory funds. Through contractual obligations, fiduciary responsibility extends to ~~twelve~~fifteen additional funds.

A fiduciary is a person who has discretionary authority or management responsibility for assets held in trust to which another has beneficial title or interest. The fiduciary is responsible for knowing the "prudent requirements" for the investment of trust assets. Remedial actions may be assessed against fiduciaries for violations of fiduciary duty.

North Dakota state law provides broad fiduciary guidelines for the SIB members. NDCC 21-10-07 specifies that "the state investment board shall apply the prudent investor rule in investing for funds under its supervision except that Section 21-10-07.1 requires the SIB to give preference to qualified investment firms and financial institutions with a presence in the state for legacy fund investment purposes. The "prudent investor rule" means that in making investments, the fiduciaries shall exercise the judgment and care, under the circumstances then prevailing, that an institutional investor of ordinary prudence, discretion, and intelligence exercises in the management of large investments entrusted to it, not ~~in regard to~~regarding speculation but ~~in regard to~~regarding the permanent disposition of funds, considering probable safety of capital as well as probable income."

Procedural prudence is a term that has evolved to describe the appropriate activities of a person (or persons) who act in a fiduciary role. Court decisions to date indicate that procedural prudence is more important in assessing fiduciary activities than actual portfolio performance. A fiduciary cannot be faulted for making the "wrong" decision provided that proper due diligence was performed.

The key to successfully discharging the SIB's fiduciary duties is the establishment of and adherence to proper due diligence procedures. While not bound by ERISA (Employee Retirement and Income Security Act of 1974), the SIB will use the procedural prudence outlined by ERISA as guidance in developing its procedures:

1. An investment policy must be established for each fund and must be in writing.
2. Plan assets must be diversified, unless under the circumstances it would be prudent not to do so.
3. Investment decisions must be made with the skill and care of a prudent expert.
4. Investment performance must be monitored.
5. Investment expenses must be controlled.
6. Prohibited transactions must be avoided.

Policy Implemented: September 20, 1995.

Amended: May 30, 1997, January 22, 1999, February 27, 2009, October 26, 2018.

POLICY TYPE: INVESTMENTS**POLICY TITLE: *INVESTMENT PROCESS***

The SIB believes that an investment program must be built and managed like any good business, with a clear statement of mission, overall objectives, roles and responsibilities, and policies and guidelines. Major issues to be faced by the SIB will revolve around:

- Setting asset allocation targets
- Setting appropriate benchmarks
- Finding the right managers
- Funds implementation and ongoing execution
- Monitoring the program
- Searching for appropriate new opportunities

Asset allocation targets:

- ~~Setting appropriate benchmarks.~~
- ~~Finding the right managers.~~
- ~~Monitoring the program.~~
- ~~Searching for appropriate new opportunities.~~

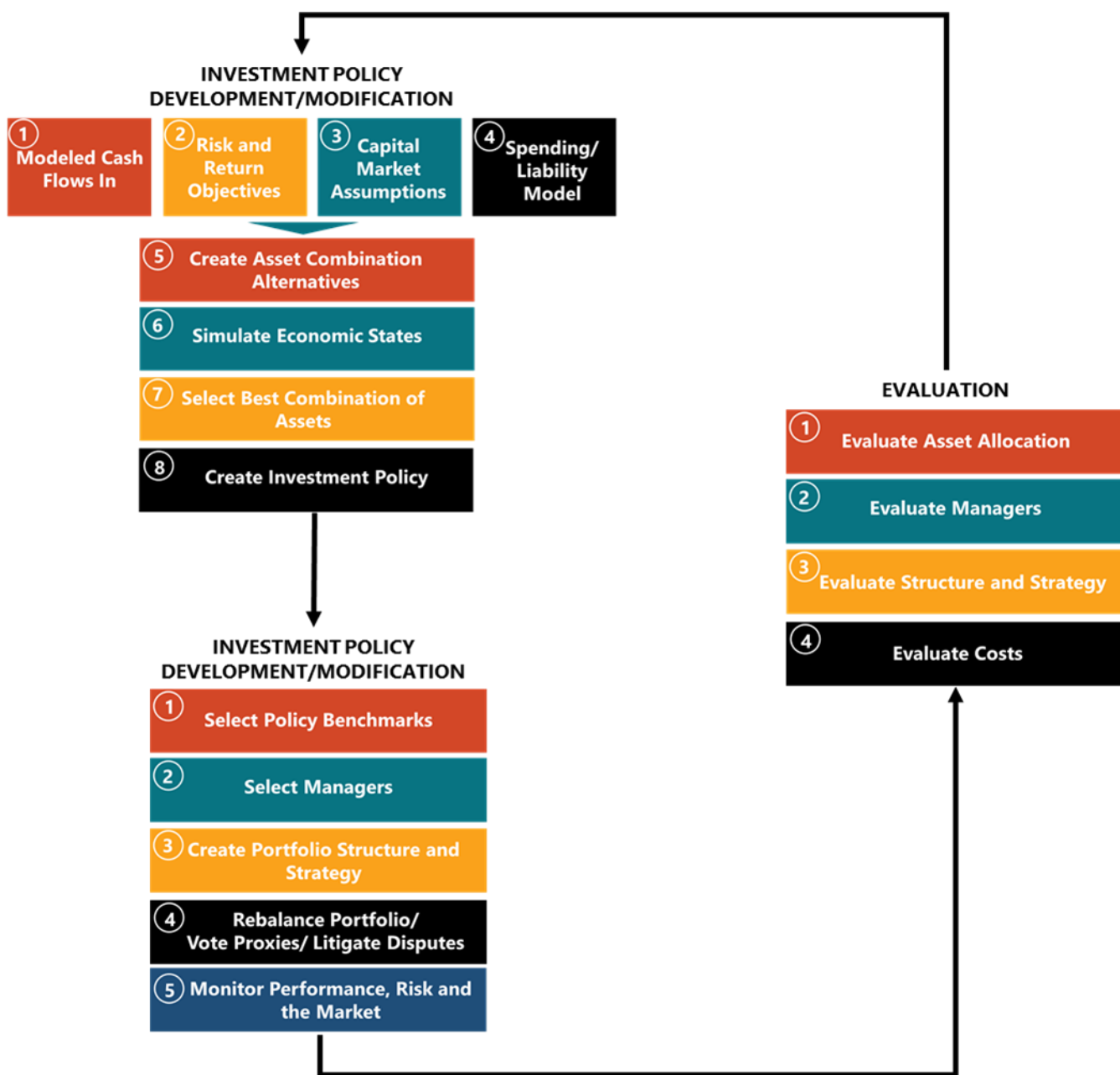
To ensure rigorous attention to all aspects of the investment program, the SIB follows an established investment process. This process, described by the diagram on the following page, involves three phases:

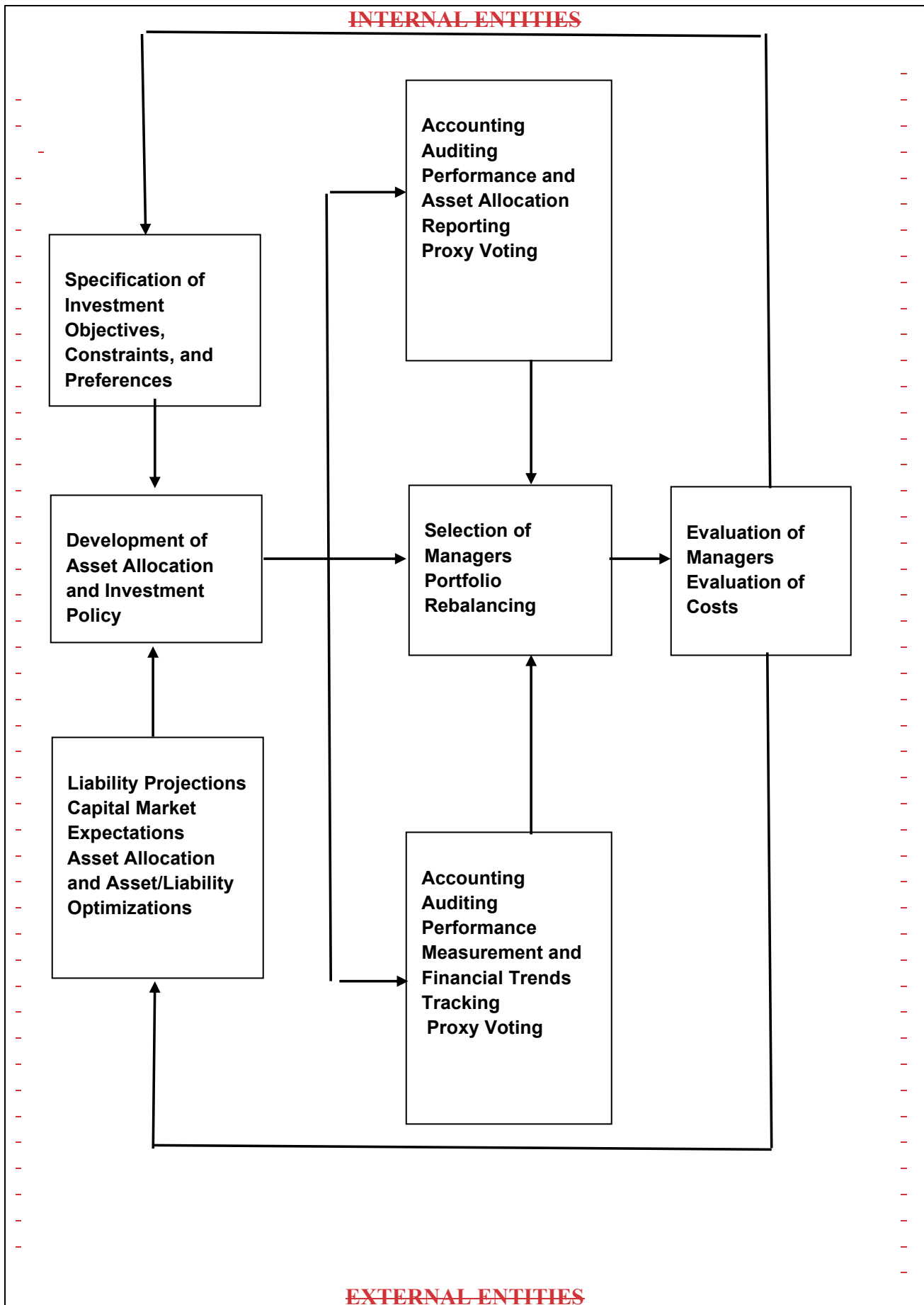
- Investment policy development/modification.
- Implementation/monitoring.
- Evaluation.

The first column of boxes describes the policy development phase, the middle column implementation/monitoring, and the last box on right evaluation. Activities associated with internal entities are shown along the top. Those associated with external entities are shown along the bottom. The middle shows activities that internal and external entities work on together.

Policy Implemented: September 20, 1995.

E-2





POLICY TYPE: INVESTMENTS

POLICY TITLE: INVESTMENT PROCESS

The key responsibilities of the entities involved in the investment program are:

Fund Governing Bodies

1. Establish policy on investment goals and objectives.
2. Establish asset allocation or approve a pool allocation.
3. Hire actuary when required.

SIB

1. Invest funds entrusted by statute and contracted entities, delegating investment authority when deemed appropriate.
2. Set policies for appropriate investments and investment practices of entrusted funds.
3. Approve asset allocation and investment policies of participating trust funds or establish pool asset allocation previously approved by the Investment Committee.
4. Monitor the progress of the implementation of the investment strategy.
5. Monitor the performance and risk of the investment program provided by an independent third-party performance appraisal.
6. The Board will receive program updates, training regarding investment topics, market updates, investment performance/risk, investment procedures, program costs and updates on investment execution of investment strategies from Investment Committee representatives.
7. Approve benchmark recommendations from an independent third-party benchmark consultant previously approved by the Investment Committee.
8. Review summaries of Investment Committee proceedings.
9. Review updates regarding specific investment strategies, manager selection, termination, guideline changes and changes to instrument usage.
10. The Board may choose to have decision authority over specific Investment Committee decisions when deemed appropriate including new investment programs, strategies, techniques, instruments, and initiatives.

Investment Committee

1. The Committee will suggest and recommend changes to the SIB Investment Policy, as necessary including any delegation of authority to RIO investment staff.
2. The Committee will review periodically and approve changes and additions to the IC Guidelines and will report any revisions to the SIB.
3. The Committee may examine internally (if approved) and externally managed portfolios, individual

POLICY TYPE: INVESTMENTS

POLICY TITLE: *INVESTMENT PROCESS*

investments, correlation among portfolios, and such other matters as the Committee deems appropriate for the purpose of understanding, measuring, controlling, monitoring, and reporting SIB investment exposure.

4. The Committee will review and approve the use of new investment instruments prior to their implementation in internal (if approved) and external SIB portfolios.
 5. The Committee will oversee the review and implementation of any other new investment programs or initiatives in all SIB portfolios and will coordinate any necessary related SIB approvals.
 6. For purposes of fulfilling its risk management and oversight responsibilities, the Committee will act as liaison between the RIO investment Staff and the SIB on issues concerning investment risk management.
 7. The Committee will review subset of asset class strategies at least quarterly to assess established risk limits and evaluate strategy and will approve such strategies annually. The relevant Investment Staff shall be responsible for the specific investment decisions and implementations including internally (if approved) and externally managed mandates that are used to execute the approved strategies.
 8. The Committee will review all compliance-related issues including compliance with statutes, administrative rules, internal and external manager investment guidelines or as otherwise requested.
 9. The Committee will review asset allocation plans and strategies and will review and approve any proposed changes to SIB's strategic asset allocations and fund-level active risk objectives before they are presented to the Board for approval. The Committee will provide consultation and assistance to the SIB, ED and staff concerning total fund allocation changes or rebalance decisions, as needed.
 10. The Committee will review and act on all requests from investment managers, both internal (if approved) and external for waivers to provisions in their investment guidelines. On an emergency basis when it is impractical to timely convene a meeting of the Investment Committee, either the Chair or Vice Chair of the committee with the concurrence of the Chief Investment Officer of the Committee or the Executive Director, may approve a waiver. That waiver will be brought to the Committee for ratification at its next regularly scheduled meeting.
 11. The Committee may review and analyze other compliance-, risk- or derivative-related (if approved) matters that are directed to the attention of the Committee by the SIB, external auditors, the Internal Audit group, and RIO investment and accounting staff.
 12. The Committee will receive quarterly reports regarding transitions (if any) and shall review with the applicable Investment Staff the costs and impacts associated with the transitions. It will also from time-to-time review reports on the trading effectiveness of investment execution of internal investment strategies (if approved).
 13. The Committee will review annual benchmark recommendations from a Board-appointed benchmark consultant and will provide its evaluation and recommendation to the Board.
 14. The Committee will review and revise portfolio guidelines as necessary.
 15. The Committee will establish procedures for the methodology and frequency of review of (i) fund, asset class and portfolio performance, (ii) performance attribution, (iii) allocation within asset classes and (iv) risk levels. Procedures will be shared with the Board.
 16. The Committee will conduct periodic round table discussions of the economic and investment environment.
4. Report the investment performance of the funds to each fund's governing authority.

POLICY TYPE: INVESTMENTS

POLICY TITLE: *INVESTMENT PROCESS*

5. Hire and terminate money managers, custodians, and consultants.

Chief Investment Officer and RIO Staff

1. Participate on the Investment Committee and report to the Board as required.
2. Implement investment policies approved by the Investment Committee and the Board.
3. Provide research and administrative for SIB client funds and client projects.
4. Recommend investment policies and procedures appropriate for governing the investment of entrusted funds.
5. Lead the development of asset allocations, investment strategies, manager mandates, manager guidelines, investment implementations and investment policies to be approved by the Investment Committee and Board.
6. Hire and terminate money managers, custodians, and consultants as delegated by the Investment Committee and Board.
7. Negotiate manger contract terms and conditions as delegated by the Investment Committee and Board.
8. Evaluate money manager adherence to investment objectives, mandate requirements and guidelines.
9. Provide performance reports to the Investment Committee, the Board and Boards of participating funds as a representative of the Investment Committee and the SIB.
10. Recommend hiring or terminating money managers, custodians, consultants, and other outside services needed to effectively manage the investment funds.
11. Develop and maintain appropriate accounting policies and investment systems for the funds entrusted to the SIB.

POLICY TYPE: INVESTMENTS

POLICY TITLE: *KEY PROGRAM ENTITIES AND RESPONSIBILITIES*

Investment Consultant

1. Measure money manager performance and monitor adherence to investment goals, objectives, and policies.
2. Assist in the annual evaluation of program policies, results, and the development of annual work plan.
3. Work with Staff to develop the asset allocation or asset/liability studies.
4. Provide information for requested money manager searches.
5. Assist in development of investment policies and manager structure and rebalancing guidelines.
6. Extension of staff for special projects.

Actuary

1. Assist fund governing bodies in developing benefit and funding policies.
2. Measure actuarial soundness of plan.
3. Perform experience studies as requested by plan sponsor.
4. Provide liability projections as needed.
5. Conduct annual evaluation of program policies, results, and assist in developmental of annual work plan.
6. Assist in implementation of annual work plan.

Auditor

1. Measure, validate, and offer an opinion on agency financial statements and management.
2. Assist in developing appropriate accounting policies and procedures.
3. Bring technical competence, sound business judgment, integrity, and objectivity to the financial reporting process.

POLICY TYPE: INVESTMENTS

POLICY TITLE: KEY PROGRAM ENTITIES AND RESPONSIBILITIES

Master Custodian

1. Provide safekeeping of all securities purchased by managers on behalf of the SIB.
2. Provide global custody services.
3. Collect interest, dividend, and principal payments in a timely manner.
4. Provide for timely settlement of securities.
5. Price all securities and post transactions daily.
6. Maintain short-term investment vehicles for investment of cash not invested by SIB managers. Sweep all manager accounts daily to ensure all available cash is invested.
7. Provide monthly, quarterly, and annual accounting reports for posting to RIO's general ledger.
8. May manage a securities lending program to enhance income.
9. Provide electronic access to accounting reports.
10. Provide other services that assist with the monitoring of managers and investments.

Portfolio Managers

1. Manage portfolios as assigned by the SIB.
2. Provide liquidity, as required, in a timely and cost-efficient manner.
3. Vote proxies.
4. Provide educational assistance to board.

Policy Implemented: September 20, 1995.

Amended: February 27, 2009

SIB

~~1. Invest funds entrusted by
statute and contracted entities.~~

~~2. Set policies on appropriate
investments and investment
practices for entrusted funds.~~

POLICY TYPE: INVESTMENTS

POLICY TITLE: KEY PROGRAM ENTITIES AND RESPONSIBILITIES

~~3.—Approve asset allocation and investment policies of participating trust funds.~~

~~4.—Report the investment performance of the funds to each fund's governing authority.~~

~~5.—Hire and terminate money managers, custodians, and consultants. Investment Officer and RIO Staff~~

~~1.—Implement investment policies approved by the SIB.~~

~~2.—Provide research and administrative support for SIB projects.~~

~~3.—Recommend investment regulations appropriate for governing the investment of entrusted funds.~~

POLICY TYPE: INVESTMENTS

POLICY TITLE: KEY PROGRAM ENTITIES AND RESPONSIBILITIES

~~4.— Assist fund governing bodies in developing asset allocation and investment policies.~~

~~5.— Evaluate money manager adherence to investment objectives.~~

~~6.— Provide performance reports to the SIB and boards of participating funds.~~

~~7.— Recommend hiring or terminating money managers, custodians, consultants, and other outside services needed to effectively manage the investment funds.~~

~~8.— Develop and maintain appropriate accounting policies and systems for the funds entrusted to the SIB.~~

Investment Consultant

~~1.— Measure money manager performance and monitor adherence to investment goals, objectives, and policies.~~

~~2.— Conduct annual evaluation of program policies and results, and assist in development of annual work plan.~~

~~3.— Assist in implementation of annual work plan.~~

~~4.— Conduct asset allocation or asset/liability studies.~~

~~5.— Conduct requested money manager searches.~~

~~6.— Assist in development of investment policies and manager~~

POLICY TYPE: INVESTMENTS

POLICY TITLE: KEY PROGRAM ENTITIES AND RESPONSIBILITIES

~~structure and rebalancing~~

~~guidelines.~~

~~7.—Extension of staff for special
projects. Actuary~~

~~1.—Assist fund governing
bodies in developing benefit and
funding policies.~~

~~2.—Measure actuarial soundness
of plan.~~

~~3.—Perform experience studies
as requested by plan sponsor.~~

~~4.—Provide liability projections
as needed.~~

~~5.—Conduct annual evaluation
of program policies and results, and
assist in development of annual
work plan.~~

~~6.—Assist in implementation of
annual work plan. Auditor~~

POLICY TYPE: INVESTMENTS

POLICY TITLE: KEY PROGRAM ENTITIES AND RESPONSIBILITIES

~~1. Measure, validate, and offer an opinion on agency financial statements and management.~~

~~2. Assist in developing appropriate accounting policies and procedures.~~

~~3. Bring technical competence, sound business judgment, integrity, and objectivity to the financial reporting process.~~

Master Custodian

~~1. Provide safekeeping of all securities purchased by managers on behalf of the SIB.~~

~~2. Provide global custody services.~~

~~3. Collect interest, dividend, and principal payments in a timely manner.~~

~~4. Provide for timely settlement of securities.~~

~~5. Price all securities and post transactions daily.~~

~~6. Maintain short-term investment vehicles for investment of cash not invested by SIB managers. Sweep all manager~~

POLICY TYPE: INVESTMENTS

POLICY TITLE: KEY PROGRAM ENTITIES AND RESPONSIBILITIES

~~accounts daily to ensure all
available cash is invested.~~

~~7. Provide monthly, quarterly,
and annual accounting reports for
posting to RIO's general ledger.~~

~~8. May manage a securities
lending program to enhance
income.~~

~~9. Provide electronic access to
accounting reports.~~

~~10. Provide other services that
assist with the monitoring of
managers and investments.~~

Portfolio Managers

~~1. Manage portfolios as
assigned by the SIB.~~

~~2. Provide liquidity, as
required, in a timely and cost-
efficient manner.~~

POLICY TYPE: INVESTMENTS

POLICY TITLE: KEY PROGRAM ENTITIES AND RESPONSIBILITIES

~~3. Vote proxies.~~

~~4. Provide educational
assistance to board.~~

~~**Policy Implemented:**~~

~~September 20, 1995.~~

~~**Amended:** February 27, 2009~~

POLICY TYPE: INVESTMENTS

POLICY TITLE: *INVESTMENT POLICY DEVELOPMENT – TRUST FUNDS*

All funds under SIB management must have a written investment policy. Investment policy forms the cornerstone of the management of any investment program. A sound investment policy ensures that fund assets are managed in a disciplined process, based on long-term fundamental investment principles.

For the larger, more complex trust funds, consultants are used to assist in policy and asset allocation development. Their specialized skills are needed to model and analyze the many variables that go into determining a proper asset allocation.

Policy development starts with the specification of investment objectives, constraints, and preferences. Fund trustees must address ~~a number of~~several factors:

- What is the fund's objective(s)?
- What is the board's tolerance for risk or threshold for under-performance?
- What are the fund's liquidity needs and cash flow characteristics?
- What are the board's asset class preferences and constraints?
- What is the actuarial earnings assumption?
- What are the legal or political considerations?
- What is the investment time horizon?

Since the ultimate objective of fund investments is to provide for the payment of future capital needs, claims, or other monetary requirements, it is essential that the investment policy be developed within the context of fund liabilities or spending policy. The development of investment policy, therefore, is always unique to the circumstances of each fund.

Complex actuarial models are used to quantify the liabilities of the pension plans and Workforce Safety and Insurance. Internal entities develop cash flow forecasts for the smaller funds based on past claims or anticipated expenditures.

Asset allocation optimizations are used to quantify the range of future investment outcomes. Investment consultants contribute needed expertise on capital market expectations and in identifying the risks associated with a particular asset allocation.

For some funds, the risk/return tradeoffs of alternative portfolios are not well represented by expected returns and standard deviation. More important are the expected results for required sponsor and participant contributions and funded ratios over time. Asset/liability modeling is the tool that allows the governing boards to examine and assess the tradeoffs leading to an appropriate investment policy.

The results of the optimizations are a description of the range of financial results that might realistically be expected to occur. These results provide the basis for determining an asset allocation.

POLICY TYPE: INVESTMENTS

POLICY TITLE: INVESTMENT POLICY DEVELOPMENT – TRUST FUNDS

In accordance with NDCC 21-10-02.1, RIO staff works with each fund's governing authority, and consultants as needed, to develop an investment policy, which includes an appropriate asset allocation, for each of the statutory funds. Contracted entities are responsible for their own policy development. **Pooling of funds is allowed by statute. A pooled allocation will have an investment policy that can be approved by each fund's governing authority.**

Each policy, as a minimum, will include the following information:

1. Fund characteristics and constraints.
 - a. An explanation as to the purpose of the portfolio and its legal structure.
 - b. Size of portfolio and the likelihood and amount of future contributions and disbursements
 - c. Participant demographics when applicable.
 - d. Fiscal health of fund.
 - e. Constraints.
 - f. Unique circumstances.
2. Responsibilities of SIB.
3. Investment objectives.
4. Standards of investment performance.
5. Asset allocation policy and guidelines.
6. Evaluation and review.

Policy Implemented: September 20, 1995.

Amended: February 27, 2009

POLICY TYPE: INVESTMENTS

POLICY TITLE: INVESTMENT POLICY DEVELOPMENT – INVESTMENT POOLS

Asset Class Implementation

The SIB may internally manage investment of funds as approved by the Investment Committee and if there is a policy approval for internal investment management by the Board. Within each asset class there are numerous manager strategies, internal and external that may be employed by the SIB to affect exposure to the various asset classes as well as achieve an excess return to the policy benchmark.

Investment Pools

Investment pools may be defined for asset allocations as well as individual asset classes, sub-asset classes, manager portfolios or transactions and unitized for allocation to client funds.

SIB investment pool policy statements will define the following:

~~The SIB does no in-house investment of funds. All investment activity is delegated to outside money managers. Within each asset class there are numerous manager styles (i.e. market sector specializations) that may be employed by the SIB to affect exposure to the various asset classes.~~

~~SIB investment pool policy statements will define the following for each asset class:~~

1. Strategic objectives.
2. Performance objectives.
 - a. Appropriate capital market benchmarks.
 - b. Excess return targets, after payment of investment management fees.
 - c. Peer-group ranking.
 - d. Risk characteristics.
 - e. Termination factors.
3. Portfolio constraints.
 - a. Quality of securities/portfolio (security – BAA/portfolio – AA).
 - b. Quality held (maximum in company/industry/economic sector).
 - c. Other specific restrictions if applicable (ADRs, 144A securities, prohibited transactions, etc.).
4. Investment structure.
 - a. Percent of assets per manager cycle.
 - b. Ranges for rebalancing.

POLICY TYPE: INVESTMENTS

5. Control Procedures

- a. Duties and responsibilities of the SIB
- b. Duties and responsibilities of money managers.
- c. Reporting requirements.

Policy Implemented: September 20, 1995.

Amended: February 27, 2009

The SIB will ensure that appropriate monitoring mechanisms ~~are in place at all times~~are always in place. The three basic mechanisms are:

- Accounting
- Auditing
- Performance Measurement

The primary objective of these functions is to provide useful information to decision makers (fiduciaries and legislators). These monitoring functions are needed to keep track of assets and manager activity and to control the asset mix. Different aspects of these activities will be conducted internally by RIO staff and externally by the master custodian, auditors, and investment consultants.

Accounting

The master custodian will provide RIO staff with such accounting detail and at such frequency as the staff deems necessary to fulfill the SIB's reporting requirements.

From this information, RIO accounting staff will generate monthly and annual financial statements for each of the trust funds managed by the SIB.

RIO management is responsible to ensure the proper valuation of all assets. Formal valuation policies must be developed and implemented utilizing industry best practices and GAAP accounting requirements.

Compliance

RIO management is responsible for developing and implementing compliance procedures utilizing industry best practices. A summary of compliance procedures and results will be presented to the SIB annually.

Auditing

The North Dakota State Auditor is responsible for the external audit of RIO. They may assign this responsibility to an outside firm which they select by way of the RFP process. The SIB Audit Committee may make recommendations to the State Auditor concerning the selection, evaluation, and termination of this firm. This firm conducts an extensive financial and management audit for each fiscal year. The audited financial statements are filed with the Legislative Audit and Fiscal Review Committee.

RIO has a dedicated internal audit function that reports to the SIB Audit Committee. The internal audit function encompasses both the investment and retirement divisions of RIO. The SIB Audit Committee has oversight responsibilities as outlined in the SIB Audit Committee charter.

Performance Measurement and Reporting

The third element of monitoring entails measuring the performance of the individual investment managers and the total fund performance of each of the funds under the SIB. The SIB will retain reputable investment consultants or performance measurement services to provide comprehensive quarterly performance measurement information. This information will include data on the capital markets, other plan sponsors, and other investment managers. Performance results for SIB accounts will be calculated from data provided by the master custodian and compared to relevant capital market benchmarks, other public funds, manager peer groups, and investment goals specified in the asset class investment policy. Time periods covered by the report may vary but generally will include the most recent quarter, last 12 months, last three years, five years, and longer time periods (as data is available).

POLICY TYPE: INVESTMENTS

POLICY TITLE: *MONITORING*

RIO staff will use appropriate sources to compile monthly performance reports for each of the funds under the SIB that show recent performance and asset mix.

Policy Implemented: September 20, 1995.

Amended: February 27, 2009, February 25, 2011.

STATEMENT OF POLICY

It shall be the policy of the State Investment Board (SIB) to vote all proxies appurtenant to shares held in the various plans administered by the Board, and to vote said shares in a manner that best serves the system's interests. Specifically, all shares are to be voted with the interest of preserving or enhancing share value. The Board endorses the Department of Labor opinion that proxies have economic power which shareholders are obligated to exercise to improve corporate performance. The Board further recognized that proxy issues are frequently complex, requiring expert guidance; accordingly, it has adopted procedures that employ such experts.

The objectives of these policies are as follows:

1. Exercise the value empowered in proxies.
2. Maintain or improve share value for the exclusive benefit of the participants.
- ~~3. Achieve changes for the common good whenever these do not conflict with the exclusive benefit objective.~~

PROCEDURES

DISTINCTION OF RESPONSIBILITIES

Master Custodian

The system's master custodian shall be responsible for timely receipt and distribution of proxy ballots to the appropriate investment management institutions.

Managers

The managers shall be responsible for promptly voting all proxies pursuant to the Board's policies, and in keeping with the managers' best judgments.

Staff

Staff, in concert with the master custodian and the managers, shall be responsible for monitoring the receipt and voting of all proxies.

Board

The Board shall administer and enforce its policies. This administration and enforcement requires reporting from responsible persons, as discussed in the following.

REPORTING

Master Custodian

The master custodian shall report quarterly in writing on all pertinent proxy issues, including (1) receipt of proxy material; (2) nature of issues; (3) due date; (4) names of managers and dates forwarded; and (5) deficiency reports covering proxies that should have been received but were not.

Managers

Managers shall report quarterly in writing on how proxies have been voted, with explanations given whenever the Board's guidelines have not been followed.

Staff

Internal compliance staff shall report annually on the efficiency of the process, the portion of total proxies that have actually been voted, and compliance with Board directives.

GUIDELINES

~~The Board believes that good corporate investment decisions require good corporate governance, and that social responsibilities cannot be ignored in these decision processes. Accordingly, the practice of faithfully voting with management will *not* be tolerated, nor will the "Wall Street Rule" which advocates the sale of shares if there is disagreement with management.~~

~~In keeping with the Board's philosophy, the managers are encouraged to vote *for* proposals that *increase* or enhance the following, and against those that decrease or diminish the same:~~

- ~~• Health of the population~~
- ~~• Environmental conditions~~
- ~~• Management and Board accountability~~
- ~~• Abolition of management entrenchment~~
- ~~• Control of executive compensation~~
- ~~• Shareholder rights and ownership~~
- ~~• Fair labor practices~~

~~Guidelines may be altered periodically by the Board as situations warrant.~~

Policy Implemented: September 20, 1995.

Amended: February 27, 2009, October 26, 2018.

POLICY TYPE: INVESTMENTS

POLICY TITLE: IMPLEMENTATION – INVESTMENT MANAGER SELECTION

The SIB hires investment managers with the intention of maintaining long-standing relationships. Care is taken to select managers for defined roles based on their strengths in designated areas. The hiring process is done in accordance with all applicable state and federal laws.

~~Some manager selections are conducted by the consultant while others may be directed by the staff in coordination with the SIB. Ultimately, the selection process is often a team effort involving the investment consultants, SIB members, and RIO staff. A consultant may be invaluable in this activity due to the large volume of data that needs to be collected, verified, and summarized. Also, their ongoing dialogue with money management firms provides useful qualitative input.~~

The investment management business has rapidly evolved since the 1990's. It is recognized that many viable firms have been formed as the result of spin-offs or start-ups and may not have a traditional long-term investment performance history in accordance with the following guidelines. There has also been a tremendous increase in the types of strategies available to institutional investors resulting in the need for flexibility in the establishment of investment criteria. Subject to the case-by-case acceptance of deviation by the SIB members, money managers must meet the following minimum selection criteria for inclusion in a manager search:

- Must be a registered investment adviser, bank, insurance company, or investment company (mutual fund). Should provide ADV Part II (registered investment adviser) prospectus (investment company) or comparable information (bank or insurance company).
- Provide at least five years of actual quarterly performance data that is time weighted a representative composite of ~~accounts, and~~ accounts and meets Global Investment Performance Standards (GIPS).
- Provide information that illustrates the key investment personnel have been together for at least five years and the capabilities of the firm can handle the current level of investment activity.
- Able to articulate the firm's investment strategies and philosophy in a manner understandable by the Board, and provide a statement that the strategy has been followed for at least five years.
- Disclose any pending or past litigation or censure.
- Be willing to acknowledge their fiduciary status in writing (mutual funds are exempted from this requirement).

The following steps will be followed in the selection process, subject to modification relative to investment strategy and manager search circumstances:

- Develop a profile of the type of manager needed. This is based on the investment goals and asset allocations. Included in the profile are such things as:
 1. Quantitative characteristics, such as GIPS-compliant composite return data, risk-adjusted rates of return and relevant portfolio characteristics.
 2. Qualitative characteristics, such as key personnel, investment philosophy, investment strategy, research orientation, decision making process, and risk controls.
 3. Organizational factors such as type and size of firm, ownership structure, client servicing capabilities, ability to obtain and retain clients, and fees.

POLICY TYPE: INVESTMENTS

POLICY TITLE: IMPLEMENTATION – INVESTMENT MANAGER SELECTION

~~The following steps will be followed in the selection process, subject to modification relative to investment strategy and manager search circumstances:~~

- ~~• Develop a profile of the type of manager needed. This is based on the investment goals and asset allocations. Included in the profile are such things as:~~

~~Quantitative characteristics, such as GIPS compliant composite return data, risk-adjusted rates of return and relevant portfolio characteristics.~~

POLICY TYPE: INVESTMENTS

POLICY TITLE: IMPLEMENTATION – INVESTMENT MANAGER SELECTION

~~Qualitative characteristics, such as key personnel, investment philosophy, investment strategy, research orientation, decision making process, and risk controls.~~

~~Organizational factors, such as type and size of firm, ownership structure, client servicing capabilities, ability to obtain and retain clients, and fees.~~

- ~~Staff will provide a written report to the Investment Committee as required on the due diligence process conducted during the selection process. This report will include selection steps followed and process steps excluded. The Investment Officer will give a written report to the SIB on the due diligence process conducted by the Investment Officer, RIO staff, and the SIB in the manager selection process. This report will include selection steps followed and process steps excluded.~~
- Consultant and/or staff use the profile to screen their data base for managers that meet SIB criteria.
- Consultant and/or staff reduce the group to the top candidates and prepare a summary report. The report will contain pertinent data on each of the candidates.
- When appropriate, on-site visits may be made by staff and board members to the candidates' home offices. Visits by board members to potential manager sites must have board approval.
- When appropriate the Investment Officer will conduct fact-finding pre-interviews. SIB trustees and RIO staff will receive notice of these pre-interviews.

Interviews are conducted with each of the finalists in Bismarck. All are required to bring the potential portfolio manager to the interview. Particular attention is paid to gaining an understanding of the investment process and determining the manager's compatibility with the SIB's ~~guidelines requirements~~ and objectives.

The Investment Officer will schedule manager interviews with the SIB. Following these interviews, the Investment Officer, with the advice of RIO staff and consultants, will make recommendations to the SIB on manager selection.

- The SIB will select the investment manager by majority vote.
- Manager(s) selected by the SIB are notified immediately by RIO staff. Unsuccessful candidates are notified by consultant.
- Investment management contracts are reviewed and finalized, sent to the Attorney General for ~~approval review~~, and executed.
- Accounts are set up at the master custodian and on the internal general ledger.
- Consultant is notified when to begin the measurement of the investment performance of the manager(s).

Policy Implemented: September 20, 1995

Amended: February 27, 2009

POLICY TYPE: INVESTMENTS

POLICY TITLE: IMPLEMENTATION – PORTFOLIO REBALANCING

Portfolio Rebalancing

The need to rebalance the portfolio can arise ~~due to~~from a new asset allocation or because market activity has driven the actual distribution of assets away from the desired mix. To minimize transaction costs ~~due to~~from rebalancing, RIO ~~works with the investment consultants to determine~~develops appropriate ranges around the target mix (which are specified in the policy statement). Rigidly adhered to, such a policy is a valuable risk control tool. By maintaining asset mix within reasonably tight ranges, the SIB avoids making unintentional "bets" in the asset mix and avoids market-timing decisions. _

All ~~of the~~ funds the SIB oversees have an asset allocation with minimum and maximum limits assigned. RIO's rebalancing policy requires the asset mix to be determined at the end of each month and that appropriate rebalancing takes place.

~~RIO's rebalancing policy requires the asset mix to be determined at the end of each month. At the end of each quarter, all portfolios deviating from the target beyond the acceptable limits are rebalanced to target.~~

Policy Implemented: September 20, 1995.

The Board and the Investment Committee ~~The SIB~~ will follow an annual evaluation cycle for the investment program to ensure systematic review of investment policies and performance results and the development and implementation of corrective action plans. Evaluation of the program seeks to answer such questions as:

- Are all investment goals being met?
- What has worked and what has not?
- Have changes occurred in the capital markets, plan design, or board philosophy to warrant changes in investment policy?
- Are money managers meeting our expectations?
- Is continued confidence in the money managers warranted?
- Are accounting practices sound and fair to participating funds?
- Is service delivered in the most cost-effective manner?

The SIB's consultants play a key role in helping to answer some of these questions. The external auditor's report provides insight on accounting practices and cost effectiveness.

Evaluation of Money Managers

Achievement of the SIB's performance goals hinges on the success of the investment strategies and money managers it employs. Evaluation of each money manager must consider the following:

- Has the manager achieved the SIB's performance objectives?
- Has the firm adhered to the investment philosophy for which it was hired?
- Have there been any organizational or personnel changes that may negatively affect future performance?
- Are areas of concern being adequately addressed?
- Can the manager perform well in the future, regardless of whether extraordinary events, long-term performance, and/or short-term performance argue for termination?

These criteria are assessed by quantitative and qualitative means:

- Analyses provided by the investment consultant.
- Annual meetings with each manager in Bismarck, onsite at the managers' offices or virtually to discuss performance, investment philosophy, organizational changes, economic outlook, and areas of concern.

Longer periods of time are better than shorter time periods when assessing a manager's performance. Ideally, performance should be assessed over a market cycle. Market cycles have varying lengths but have historically averaged 5-7 years. The SIB will use a minimum five-year period to evaluate manager performance against long-term performance standards. Long-term performance standards will be a market index that the manager has previously agreed to be measured against.

Shorter-term performance standards will also be established for each money manager. These standards will incorporate a minimum three-year measurement period and measure the manager against a previously agreed-upon peer group or style market index.

Long-term performance standards, short-term performance standards, extraordinary events, and termination factors will be incorporated in the written asset class investment policies.

Evaluation of Program Costs

Costs will be broken out by internal administration, investment consultants, master custodian, and external manager fees. Reports will detail this information by investment pool, managers, and by fund.

These costs will be compared to other funds on an annual basis and generally include a fee study conducted by an experienced investment consultant every two years. Staff is encouraged to identify other cost-comparison sources which may include the engagement of specialized fee consultants to conduct in-depth fee reviews on a periodic basis, subject to board review and approval.

Policy Implemented: September 20, 1995.

Amended: October 26, 2018, July 22, 2022.

POLICY TYPE: INVESTMENTS

POLICY TITLE: PERFORMANCE RELATED INVESTMENT MANAGER REVIEW

The North Dakota State Investment Board (SIB) recognizes the inherent importance of assessing an investment manager because of performance. Thus, the following process of evaluation includes quantitative *and* qualitative input. This procedure is structured to assist the SIB in recognizing potentially distressed investment managers, initiating a formal review process, and providing guidelines for termination if necessary. Note: The “Manager Review” terminology or concept is not meant to cause the manager to make substantive changes in investment philosophy, style, or strategies. Rather, it is intended to define a period of close scrutiny of the manager’s activities, circumstances, and investment results.

Factors which may result in a Manager Review:

Significant changes in organizational structure

Significant changes in investment philosophy

Significant deviation in portfolio management from stated philosophy (style drift)

Substandard investment performance

Diminished confidence in manager

Manager Review Procedures:

Information is submitted to, or generated by, the Board which initiates consideration of a Manager Review.

If warranted, the Board takes action to initiate a Manager Review.

Based on the situation and with input from the Investment Director, the SIB suggests appropriate action to facilitate the Review. Action may include telephone conferencing, local or on-site visits with manager, investigation by consultants, appearance of manager before a select committee of the SIB, or appearance of the manager before the SIB. Investment Director initiates investigation of situation based on direction from SIB.

The Investment Director report’s findings to SIB at a subsequent meeting.

After considering findings of the Manager Review, SIB may:

- Remove manager from Review status
- Suggest additional action to facilitate Manager Review
- Relieve manager of duties

POLICY TYPE: INVESTMENTS

POLICY TITLE: PERFORMANCE RELATED INVESTMENT MANAGER REVIEW

In the case where continued investigation is warranted, the Investment Director will report new information and/or recommendations to the SIB as appropriate. It will be considered the responsibility of the Investment Director to maintain awareness and consideration of the Review until the situation is resolved.

It is important to recognize that situations occasionally arise of such a serious nature that a Manager Review process must be immediately initiated. In such cases, the Investment Director is granted the authority to place an investment manager under Review, including the freezing of assets if necessary, and report on such action at the next meeting of the State Investment Board.

In every case, the Investment Director is responsible for documenting the Manager Review process including recognition of:

- Reason of Manager Review
- Action taken to investigate the situation
- Report on results of investigation
- Report on resultant action taken by SIB
- Notification of investigation and conclusions to manager and consultants

A complete record of Manager Review activities and history shall be maintained at the ND Retirement and Investment Office.

Policy Implemented: June 27, 1997.

POLICY TYPE: INVESTMENTS

POLICY TITLE: BANK OF NORTH DAKOTA MATCH LOAN PROGRAM

The SIB has a commitment to the Bank of North Dakota Match Loan Program. The purpose of the program is to encourage and attract financially strong companies to North Dakota. The program is targeted to manufacturing, processing and value-added industries.

The SIB provides capital to the program by purchasing Certificates of Deposit (CD's) from the Bank of North Dakota. The CD's are guaranteed by the state, typically have seven to fifteen year maturities and pay interest pegged to US Treasury notes.

The source of funding for CD's shall be determined by the Investment Director; that funding to be from the most appropriate source consistent with liquidity and relative yield and return objectives and constraints.

Policy Implemented: April 24, 1998.

Amended: February 27, 2009

POLICY TYPE: INVESTMENTS

POLICY TITLE: ACCEPTING NEW CLIENTS

NDCC 21-10-06 states *“The state investment board may provide investment services to, and manage the money of, any agency, institution, or political subdivision of the state, subject to agreement with the industrial commission. The scope of services to be provided by the state investment board to the agency, institution, or political subdivision must be specified in a written contract. The state investment board may charge a fee for providing investment services and any revenue collected must be deposited in the state retirement and investment fund.”*

When a request is received by staff from a potential new investor requesting investment services from the State Investment (SIB), the following steps shall be followed.

1. Staff will conduct initial discussions with the potential client regarding type of fund, risk tolerance, size of fund, services to be provided, costs, etc.
2. Staff will recommend that an Asset/Liability study be conducted by the potential client if one has not been done recently. This discussion will include a description of the asset classes available for investment with the SIB to be included in their study.
3. If the potential client is still interested in participating in the SIB program, staff will bring the preliminary request to the SIB for acceptance. It shall be the policy of the SIB to take the following into consideration when determining if a new investor request will be accepted.
 - a. Internal staff administrative capacity.
 - b. Compatibility of new investor’s goals and risk tolerances with the existing SIB program structure.
 - c. Whatever other factors the SIB determines to be appropriate to the decision.
4. If the SIB chooses to accept the preliminary request, staff will provide the necessary template documents to the potential client for review and completion. These documents include a contract for services and investment guidelines.
5. Once documentation is completed, staff will request to have the issue included on the Industrial Commission’s agenda for their approval. Copies of all documentation will be provided for their review.
6. If approved by the Industrial Commission, final documentation will be presented to the SIB for final acceptance.
7. If accepted, staff will work with the new client to set up transfer of funds and implementation of asset allocation as directed. All new clients will be brought in as of the last day of a calendar quarter.
8. Fees will be charged with the intention of covering all associated costs as described in RIO Fiscal Management procedure “Investment Fee Allocations”.

Policy Implemented: November 20, 2009

POLICY TYPE: INVESTMENTS

POLICY TITLE: SECURITIES MONITORING AND LITIGATION

General Purpose

1. The North Dakota State Investment Board (“SIB”) is a fiduciary for assets held in trust for the benefit of SIB clients, including their beneficiaries.
2. In order to carry out its fiduciary duty to prudently invest and diversify the assets of the various investment funds, the SIB invests considerable assets in global public securities markets.
6. The efficient and effective deployment of plan assets requires that in seeking returns market risks must be prudently assumed and managed. Investing in publicly-traded securities in regulated markets under accounting, disclosure and business practice laws and regulations provides general, but not perfect assurance that the information forming the basis for investments is accurate, conforms with accepted accounting practices, and is not distorted due to misfeasance, malfeasance or nonfeasance, or the timing of information disclosures by persons or entities with the ability to affect market prices of the investment securities.
7. Legal action is sometimes necessary to attempt to recover all or part of losses the funds may incur due to alleged improper action or inaction w h i c h results in the impairment of the value of the funds’ security holdings.
8. Most such actions will be prosecuted through class action litigation whether or not the SIB takes an active role as a plaintiff or a passive role as a member of a certified class of plaintiffs. Any ultimate award or settlement from a class action will be ratably allocated among legitimate claimants.
9. The SIB will generally only consider pursuing active participation in securities actions when such a role is expected to add value by enhancing the prospect for recovery, increasing the amount of recovery, assuring more efficient and effective prosecution of the case, or identifying and addressing corporate governance issues through litigation.

For purposes of this Policy, “active participation” means seeking status as lead plaintiff, co-lead plaintiff, or filing separate legal action.

Non-Active Recovery and Filing

1. SIB will require as part of its agreement with its custodial bank or other designated agent, that adequate securities class action monitoring is maintained on an ongoing basis, sufficient to assure that most of the actual awards and settlements for such cases are tracked and identified and that proof of claim forms, including supporting documentation, will be properly and timely filed.
2. SIB may engage one or more legal firms that specialize in prosecuting security class-action cases; any such engagement is subject to the special appointment requirements of N.D.C.C. § 54-12-08. For these purposes only, such firm(s) may be granted ongoing access to security holdings information through the custodian bank or other designated agent.

POLICY TYPE: INVESTMENTS

POLICY TITLE: *SECURITIES MONITORING AND LITIGATION*

3. An agreement with any law firm for non-litigation services will not commit SIB to employing said firm in the event that it seeks to represent SIB as an active participant in any securities related litigation. Such representation must be effected by a separate retainer agreement between the SIB and said firm, or another, depending on such factors as the potential monetary scope, the nature of the case and industry specialty that may be required, the allocation of current or past cases among candidate firms, the likely duration and cost of prosecuting such a case, retainer fees or contingency splits, the venue in which the case is to be filed, and other considerations.
4. The custodial bank or other designated agent will be required to provide the Retirement and Investment Office (“RIO”) with periodic reports that detail class action cases monitored, claims filed, and award or settlement distributions received. RIO will maintain these records and provide an update to the SIB or Securities Litigation Committee (Committee) with regards to accounting information on distributions received on claims filed by the custodian bank or other designated agent on our behalf.

Active Participation in Cases

1. The Executive Director will initiate active participation in securities cases only upon prior review and approval of the SIB or Committee. Before bringing any recommendations to the SIB or Committee, the Executive Director, with significant assistance from legal counsel from the Office of the Attorney General, will assess the merits and prospects for active participation by reference to the criteria and factors outlined in this section.
2. Decision Criteria and Factors:
 - a. The decision to participate in an active capacity in security litigation should be based on the totality of the circumstances. Dollar loss amounts are important, but not the sole or overriding factor to consider in making such recommendations by the Executive Director, or determinations by the SIB or Committee.
 - b. Potential losses to SIB clients must be significant in order to warrant participation as a lead plaintiff, co-lead plaintiff, or separate litigant in U.S. or Canadian cases. Generally, in cases where the potential loss does not exceed the \$5 million, the SIB will generally avoid active participation.
 - c. The *prima facie* merits of the claim for loss, and the factual basis for the action, recognizing that the full discovery process will not commence until the class has been certified by the court in which such case is to be filed.
 - d. The availability of witnesses, and possible support that may be obtained from investment managers, consultants, and the custodial bank through discovery.
 - e. The potential that any defendants or insurers will be able to pay an adequate recovery to the class, without impairing the value of any current security holdings SIB may yet hold in the issuer in the portfolio.

POLICY TYPE: INVESTMENTS

POLICY TITLE: SECURITIES MONITORING AND LITIGATION

- f. The ability of the law firm recommending action on the part of SIB to prosecute the case effectively, in the venue where such case is likely to be filed, and the experience of the firm in managing such cases individually or in partnership with other firms.
 - g. Potential long-term benefits from corporate governance changes from pursuing litigation.
 - h. The ability of SIB to serve as a fiduciary on behalf of all class members in the case, especially in relative terms to other institutional investors that may be considering the same case.
 - i. Potential costs that may be incurred. Special consideration must be given to any case that must be filed in a non-U.S. venue under the “Morrison” criteria established by the U. S. Supreme Court in a 2010 decision, since costs of litigation and potential liabilities of unsuccessful claims may be significant.
 - j. Current workload and staffing resources required for the fulfillment of SIB’s primary member service functions, and whether participation might displace time and staff resources needed for core business functions.
3. Decision Criteria and Factors for cases filed in a non-U.S. venue: In addition to the Criteria and Factors set forth in Subsection 2, the SIB or Committee may consider the following:
- a. The proposed funding arrangements for the action.
 - b. Evaluate the merits and risks of the case in light of the law of the jurisdiction in which the action would be brought. Generally, in cases where the potential loss does not exceed the Jurisdictional Thresholds referenced in Exhibit A, the SIB will avoid opt-in or group litigation participation.

Roles in Managing & Monitoring Litigation

- 1. The SIB or Committee will make the final determination of whether it is in the SIB’s best interest to pursue active participation in any case and whether to engage any law firm and the terms of such engagement.
- 2. Decisions regarding the conduct and implementation of the SIB’s or Committee’s decision to participate will be the responsibility of the Executive Director, or an approved member of the management staff if he so delegates. When feasible and advisable, the Executive Director shall seek advice and direction from the SIB or Committee on strategic and legal issues that may arise in prosecuting the action on behalf of the SIB and its clients. The Executive Director shall timely report to the SIB or Committee on the progress of the litigation.
- 3. The Executive Director shall be responsible for management of the relationship with any portfolio monitoring law firm or organization for such purpose. Based on the need for additional coverage, the Executive Director and Committee will determine whether one or several firms are needed to fulfill the goals of this Policy and may terminate such monitoring agreements as judgment advises.

POLICY TYPE: INVESTMENTS

POLICY TITLE: SECURITIES MONITORING AND LITIGATION

4. Any agreement for portfolio monitoring services that includes a fee or subscription cost must first be approved by the SIB or Committee before execution by the Executive Director.

Policy Review

1. The Committee and SIB shall review this policy annually to ensure that it remains relevant and appropriate.

Exhibit A
Non-US Opt-In and Group Litigation
Jurisdictional Thresholds

Jurisdictional Description	Threshold
Passive/very low risk jurisdictions, simple registration or claim filing (no participation in litigation required, strong anonymity, very low costs) including, but potentially not limited to: Australia, Israel, Netherlands (including Dutch Foundations), regulatory funds (e.g. Compensation Schemes in UK)	None
Low risk jurisdictions (no discovery, low cost) including, but potentially not limited to: Japan	\$1 million
Moderate risk jurisdictions (moderate cost, funded/insured to protect from cost shifting, some restricted discovery, not fully public) including but potentially not limited to: Germany, Austria, Belgium, Switzerland, Denmark, Spain, Finland, France, Hong Kong, Indonesia, Ireland, Italy, Korea, Luxembourg, Malaysia, Norway, New Zealand, Portugal, Sweden, and Thailand	\$5 million
High risk jurisdictions (potential in-person discovery, no anonymity, uncapped fees) including, but potentially not limited to: Taiwan, United Kingdom, Singapore, Brazil	\$10 million

Jurisdictional Thresholds are developed in consultation with legal counsel including other designated agents which are experts in global securities litigation matters.

Policy Implemented: November 20, 2015

Policy Amended: April 27, 2018, May 24, 2019

EXHIBIT E-1

State Investment Board (SIB) Members 2021-2022:

Position	Incumbent	Designation	Term Expiration
Lt. Governor	Brent Sanford	Statutory	12/31/24
State Treasurer	Thomas Beadle	Statutory	12/31/24
State Insurance Commissioner	Jon Godfread	Statutory	12/31/24
Commissioner University & School Lands	Jodi Smith <u>Joe Heringer</u>	Statutory	open
Executive Director Workforce Safety & Insurance	Bryan Klipfel	Statutory	open
Trustee, TFFR	Rob Lech	Appointed by TFFR Board	6/30/25
Trustee, TFFR	Cody Mickelson	Appointed by TFFR Board	6/30/26
Trustee, TFFR	Mel Olson	Appointed by TFFR Board	6/30/23
Trustee, PERS	Adam Miller	Appointed by PERS Board	6/30/22
Trustee, PERS	Troy Seibel	Appointed by PERS Board	6/30/26
Trustee, PERS	Yvonne Smith	Appointed by PERS Board	6/30/24

Retirement and Investment Office (RIO) Staff:

Position	Incumbent	Education
Executive Director/ Chief Investment Officer	David Hunter	BS, Accounting, Northern Illinois University MBA, Finance, University of Chicago
Deputy Executive Director/ Chief Retirement Officer	Jan Murtha	B.A. Economics & Management, Albion College J.D. Marquette University Law School
Deputy Chief Investment Officer	Darren Schulz	BBA, Finance, Georgia State University, CFA, CAIA
Chief Financial Officer	Connie Flanagan	BS, Accounting, University of Maryland

Position	Incumbent
Executive Director	Jan Mutha
Chief Investment Officer	Scott Anderson
Deputy Executive Director/ Chief Retirement Officer	Chad Roberts
Deputy Chief Investment Officer	Eric Chin
Chief Financial Officer/ Chief Operating Officer	Ryan Skor

External

Function	Firm	Date Hired
Investment Consultant	Callan Associates Inc.	4/84
Actuary (TFFR)	Segal	7/11
Auditor	CliftonLarsonAllen	4/12
Master/Global Custodian	The Northern Trust Company	12/83

E-I.1

F. TFFR PROGRAM

Reference: Teachers' Fund for Retirement Program Manual

<https://www.rio.nd.gov/sites/www/files/documents/PDFs/TFFR/teachersprogrammanual.pdf>

G. TRUST FUND INVESTMENT GUIDELINES

AG Settlement Fund

Bismarck Deferred Sick Leave

Bismarck Employees

Bismarck Police

Bonding

Budget Stabilization

Cultural Endowment Fund

Fargo - FargoDome Permanent Fund

Fire and Tornado

City of Grand Forks

Park District of the City of Grand Forks

Insurance Regulatory

Job Service

Legacy Fund

ND Association of Counties

ND Board of Medicine

ND Parks and Recreation

PERS

PERS Group Insurance

PERS Prefunded Health

Petroleum Tank

Risk Management

Risk Management Workers Comp

Teachers' Fund for Retirement

Tobacco Prevention and Control Fund

Veterans' Cemetery Trust Fund

Workforce Safety & Insurance

H. BY-LAWS

	<u>PAGE</u>
Authority.....	I-1
Board	I-2
Officers and Duties.....	I-3
Meetings	I-4
Committee's.....	I-5
Rules of Order	I-6
Administrative Office.....	I-7
Amendment	I-8

EXHIBITS

<i>Committee Charters.....</i>	<i>E-I</i>
--------------------------------	------------

CHAPTER 1 - AUTHORITY

- Section 1-1. The State Investment Board (SIB) has the authority to maintain an administrative office under Chapter 54-52.5, North Dakota Century Code.
- Section 1-2. The SIB has the authority and responsibility for providing administrative services to the North Dakota Teachers' Fund for Retirement (TFFR) and the North Dakota State Investment Board. This includes organizing, staffing, and maintaining an administrative office.
- Section 1-3. The SIB has the authority and responsibility for developing and monitoring the agency budget.
- Section 1-4. The SIB has the authority and responsibility to maintain office records, an accounting system, and data processing support services.
- Section 1-5. The SIB has the authority to pay all claims and investment expenses filed with TFFR and the SIB.

Policy Implemented: June 23, 1995.

CHAPTER 2 - BOARD

- Section 2-1. Members of the State Investment Board (SIB) are the Governor, State Treasurer, Commissioner of University and School Lands, director of Workforce Safety & Insurance, Commissioner of Insurance, three members of the Teachers' Fund for Retirement (TFFR) Board, two of the elected members and one member of the Public Employees Retirement System (PERS) Board as selected by those boards. The PERS and TFFR Boards may appoint an alternate designee with full voting privileges to attend meetings of the SIB when a selected member is unable to attend. The director of Workforce Safety and Insurance may appoint a designee, subject to approval by the Workforce Safety and Insurance board of directors, to attend the meetings, participate, and vote when the director is unable to attend.
- Section 2-2. The SIB will have general charge and management of the business of TFFR and the SIB, subject to law, administrative rules and regulations, and governance policies. The SIB will make such policy as necessary to fulfill this obligation.
- Section 2-3. When the statutes allow a Deputy to represent a member of the SIB or an alternate to represent the TFFR or PERS Board, the Chair will recognize the individual for the record, and the individual(s) will then have the right to vote on matters before the SIB.
- Section 2-4. The SIB will be responsible for the operation of an administrative office that will provide support services to TFFR and the SIB.

Policy Implemented: June 23, 1995.

Amended: July 22, 2011.

CHAPTER 3 - OFFICERS AND DUTIES

- Section 3-1. The officers of the SIB are a Chair and Vice Chair, one of which must be an appointed or elected member of the TFFR or PERS Board. The officers will be elected by the SIB to a one-year term at the first regularly scheduled meeting following July 1 of each year. Vacancies will be filled by the SIB at the first scheduled meeting following the vacancy.
- Section 3-2. Chair. The Chair will preside at all meetings of the SIB.
- Section 3-3. Vice Chair. In the absence of the Chair, the Vice Chair will perform the duties of the Chair.
- Section 3-4. Executive Director. An Executive Director will be retained by the SIB. The Executive Director will serve at the SIB's pleasure, be responsible for keeping the records of the SIB and TFFR Board actions, and perform such duties as the SIB prescribes. The Executive Director will make out and give out all notices required to be given by law, procedures, or rules and regulations of the two boards.

Policy Implemented: June 23, 1995.

CHAPTER 4 - MEETINGS

- Section 4-1. Regular meetings of the SIB to conduct business are to be held as often as necessary. The SIB will meet at least once each quarter. Notice of all meetings will be made in accordance with North Dakota Century Code, Section 44-04-20.
- Section 4-2. Meetings of the SIB may be called by the Chair or two members of the SIB upon reasonable notice in writing to the other members of the Board. (NDCC 21-10-04)
- Section 4-3. A quorum will be six (6) members of the SIB.
- Section 4-4. Voting on matters before the SIB will be contained in the minutes which will show the recorded vote of each SIB member.
- Section 4-5. All meetings of the SIB are open to the public.
- Section 4-6. A record of procedures will be kept by the Executive Director on all meetings of the SIB. The records of these proceedings are public documents, and copies will be distributed to the TFFR, SIB, and PERS Boards and upon request.
- Section 4-7. Public participation during meetings of the SIB may be allowed at the discretion of the Chair.
- Section 4-8. SIB members, except elected and appointed officials, will be paid the amount specified in NDCC 21-10-01 per SIB meeting attended.

Expenses will be paid according to state law and OMB policies.

Policy Implemented: June 23, 1995.

Amended: July 22, 2011.

CHAPTER 5 - COMMITTEES

Section 5-1. The SIB has five standing committees: Audit, Executive Review and Compensation, Governance and Policy Review, Investment, and Securities Litigation.

Section 5-1-1. Audit Committee. The Audit Committee will consist of five members. They will be selected by the SIB. Three members of the committee will represent the three groups on the SIB (TFFR Board, PERS Board, and elected and appointed officials). The other two members will be selected from outside of the SIB and be auditors with at least a Certified Public Accountant (CPA) or Certified Internal Auditor (CIA) designation.

The Audit Committee will have responsibility for oversight of financial reporting, auditing, and internal control. The Audit Committee will be responsible for developing a written charter, to be approved by the SIB, which puts forth the authority, responsibilities, and structure of the Audit Committee. It will also be the responsibility of the Audit Committee to supervise the audit activities of the internal audit staff, work with the State Auditor/external auditors, and develop reports for the SIB.

The Executive Director shall supervise the administrative activities of the internal/external audit programs such as travel, securing contracts, paying fees, maintaining official reports, etc.

The supervisor of the internal audit function will be the staff member directly responsible to the Audit Committee.

Membership on the Audit Committee will be for one year or termination of term on the SIB. Vacancies will be filled by the SIB at the first scheduled meeting following the vacancy. There will be no limit to the number of terms served on the Audit Committee.

Section 5-2. No member of the SIB will be paid, other than expenses, for attending seminars, conferences, or other such educational meetings.

Section 5-3 Securities Litigation Committee. The Securities Litigation Committee will consist of five members. They will be selected by the SIB and include two SIB members, RIO's legal counsel, RIO's chief financial officer and RIO's executive director.

The Securities Litigation Committee will assist the SIB in fulfilling its oversight responsibilities with regards to monitoring securities litigation. The Committee helps to determine when an active role should be pursued in regards to securities litigation affecting SIB client investments. This Committee also serves as a communication link for the SIB, RIO, third party securities litigation firms and others.

The Executive Director shall supervise the administrative activities of the Securities Litigation Committee with the assistance of RIO's legal counsel and Chief Financial Officer.

Membership on the Securities Litigation Committee will be for an unlimited term but subject to annual review and acceptance by the SIB every year. Vacancies will be filled by the SIB at the first scheduled meeting following the vacancy.

Section 5-4. Executive Review & Compensation Committee: See Executive Review & Compensation Committee Charter

Section 5-5. Governance and Policy Review Committee: See Governance and Policy Review Committee Charter

Section 5-6. Investment Committee: See Investment Committee Charter

Policy Implemented: June 23, 1995.

Amended: October 26, 2018, July 22, 2022

CHAPTER 6 - RULES OF ORDER

Section 6-1. All SIB meetings will be conducted in accordance with Robert's Rules of Order Newly Revised except as superseded by these by-laws and board governance policies.

Policy Implemented: June 23, 1995.

CHAPTER 7 - ADMINISTRATIVE OFFICE

Section 7-1. For the purpose of carrying out the day-to-day business of TFFR and the SIB, an administrative office will be maintained in Bismarck, North Dakota. This office is called the Retirement and Investment Office (RIO).

Section 7-2. The Executive Director will be the administrator of the office.

Policy Implemented: June 23, 1995.

CHAPTER 8 - AMENDMENTS

Section 8-1. These by-laws may be amended by a two-thirds vote of SIB members. All amendments must be mailed to SIB members at least thirty (30) days prior to the meeting at which they are considered.

Section 8-2. All amendments must include an effective date.

Policy Implemented: June 23, 1995.

EXHIBITS – COMMITTEE CHARTERS

CHARTER OF THE AUDIT COMMITTEE OF THE NORTH DAKOTA STATE INVESTMENT BOARD

PURPOSE

The Audit Committee (the Committee) is a standing committee of the North Dakota State Investment Board (SIB) created to fulfill its fiduciary oversight responsibilities of the North Dakota Retirement and Investment Office (RIO) and to serve as a communications link among the SIB, the RIO's management and Internal Audit staff, independent auditors, and others.

The Committee will assist with the integrity of the RIO's financial reporting process and system of internal controls, the RIO's compliance with legal and regulatory requirements, the performance of the RIO's Internal Audit function and independent auditors, and the RIO's management of risks in the Committee's areas of responsibility. Internal Audit will assist RIO in accomplishing its objectives by bringing a systematic, disciplined approach to evaluate and improve the effectiveness of risk management, control, and governance processes.

AUTHORITY

The Committee is authorized to provide oversight to the Internal Audit function and the independent audit for the RIO. These activities provide assurance that RIO's financial condition and results of operations are accomplished in accordance with the RIO's policies and procedures and legal and regulatory requirements. The Committee may investigate any activity of the RIO and may retain persons as necessary from within or outside the RIO having special competence to assist the Committee in the accomplishment of its responsibilities.

The RIO's Supervisor of Internal Audit will be the staff member reporting administratively to the Executive Director/Chief Investment Officer and functionally to the Committee.

The Executive Director will supervise the administrative activities of the Internal Audit function and independent audit activities such as securing contracts, paying fees, maintaining official reports, and other appropriate activities.

COMPOSITION

The Committee will consist of five members, selected by and approved by the SIB. Three members of the Committee will represent the three groups on the SIB: Teachers' Fund for Retirement (TFFR) Board, Public Employees Retirement System (PERS) Board, and elected and appointed officials, and two members selected from outside of the SIB and the RIO. The SIB should select committee members who are both independent and financially literate.

Membership on the Committee will be for one year or termination of term on the SIB. Vacancies will be filled by the SIB at the first scheduled meeting following the vacancy. There will be no limit to the number of terms served on the Committee

The Committee will elect a Chair, and a Vice Chair. A liaison will be appointed by the Chair. The Chair will preside at all meetings of the Committee. In the absence of the Chair, the Vice Chair will perform the duties of the Chair.

The liaison will report annually to the SIB on the results of the independent audit and at least four times a year to the SIB and TFFR board on the activities of the Committee and other pertinent information.

The Committee may form, and delegate authority to, subcommittees when it deems appropriate.

MEETINGS

The Committee will meet generally four times a year, with authority to convene additional meetings, as circumstances require or to adequately fulfill all the obligations and duties as outlined in this charter.

Meeting agendas will be prepared by the Supervisor of Internal Audit and approved by the Committee Chair, unless otherwise directed by the Committee and will be provided to the Committee members along with briefing materials before the scheduled committee meeting.

Committee members are expected to attend each meeting, in person or via tele- or video-conference. The Supervisor of Internal Audit, a representative of RIO's management team and others necessary to provide information and to conduct business will attend meetings. The Committee may invite staff of the RIO, auditors or others to attend meetings, as necessary. Meetings will be conducted in accordance with NDCC 44-04-17.1. The Committee may hold executive sessions as allowed under state law.

The Committee will act only on the affirmative vote of three of the committee members at a meeting. To conduct business, a quorum will be three members of the Committee. Should a quorum not be present before a scheduled meeting or during a meeting, the Chair will announce the absence of a quorum and the members will disburse. Meeting minutes will be prepared by the RIO, or as otherwise directed by the Committee. Approved meeting minutes of the Committee will be submitted to the SIB.

RESPONSIBILITIES

The RIO's management is responsible for financial and other reporting, internal controls, and compliance with laws, regulations, and ethics. The Committee has the responsibility to provide oversight in the areas of:

- the reliability and integrity of financial and operating information;
- compliance with policies, plans, procedures, pertinent laws and regulations;
- compliance with the Code of Conduct applicable to the SIB, TFFR Board, and RIO employees;
- safeguarding of assets;
- economical and efficient use of resources; and
- effectiveness of achieving desired results from operations.

To this end, the Committee will:

Independent Audit

- Review the independent auditors' proposed audit scope and approach, including coordination of audit effort with RIO's Internal Audit staff and any developments in accounting principles and auditing standards that may affect either the financial statements or the audit.
- Inquire as to any proposed changes in accounting or financial reporting procedures and of any unusual events that could impact the financial statements.

- Review the results of the financial statements report with the independent auditors and the RIO's management, prior to the release of the financial statements report to the SIB and other officials. This review will include the following, as applicable:
 - Any major problems encountered by the independent auditors and the resolution thereof;
 - The effect on the audit of any developments;
 - Any unresolved differences between the independent auditors and the RIO's management;
 - Any other significant comments or recommendations of the independent auditors or the RIO's management;
 - The adequacy of the RIO's internal accounting controls and accounting policies, procedures, and practices; and
 - Understand the scope of independent auditors' review of internal control over financial reporting, and obtain reports on significant findings and recommendations, together with the RIO's management responses.
- Consider the effectiveness of the RIO's internal control system, including information technology security and control.
- Consider whether the financial statements are complete, consistent with information known to committee members, and reflect appropriate accounting principles. This will include the following, as applicable:
 - The accuracy and completeness of the information in other sections of the annual report and related regulatory filings;
 - The significant accounting and reporting issues, including complex or unusual transactions and highly judgmental areas, and recent professional and regulatory pronouncements, and understand their impact on the financial statements; and
 - All matters required to be communicated to the Committee under generally accepted auditing standards with the RIO's management and the independent auditors.
- Review non-audit services, if any, performed for the RIO by the independent auditors.

Audit Services

- Consider the effectiveness of the Internal Audit function, within The Institute of Internal Auditors' *International Professional Practices Framework for Internal Auditing* consisting of the *Definition of Internal Auditing, Code of Ethics and the Standards*.
- Review with the Executive Director and the Supervisor of Internal Audit the audit charter, activities, staffing, and organizational structure of Internal Audit.
- Review and approve the annual risk-based audit work plan and all major changes to the plan.
- Bring to attention of the Board any internal audit issues the Committee determines significant and appropriate for Board consideration.
- Participate with the Executive Director in the appointment and annual evaluation of the Supervisor of Internal Audit. Work with the Executive Director on any changes in staffing, including the addition, termination, or replacement of auditors, and the approval of salary increases and/or promotions other than those authorized by the legislature.

Risk Management

- Obtain information and/or training to enhance the Committee's understanding of organization and its related risk management processes.
- Review the adequacy of the organization's policy on risk management.

- Review the effectiveness of the organization's system for assessing, monitoring, and controlling significant risks or exposures.
- Review management's reports on risks and related risk mitigations.
- Hire outside experts and consultants in risk management, as necessary, subject to full board approval.

Compliance

- Review staff compliance with federal and state laws and North Dakota administrative code as applicable to RIO, the SIB and TFFR Board programs, and the process for communicating the code of conduct to the RIO's staff, and for monitoring compliance through the receipt of the audit results.
- Review the process for communicating and monitoring compliance with the code of ethics, code of conduct, and fraud policies.
- Review the findings of any examinations by regulatory agencies, any auditor observations related to compliance, and the responsiveness and timeliness of management's actions to address the findings/recommendations.
- Obtain updates from the RIO's management and legal counsel regarding compliance matters, as deemed necessary.

Reporting Responsibilities

- Report to the SIB about the Committee's activities, issues, and related recommendations.

Provide a written report annually to the SIB, describing the Committee's composition, responsibilities and how they were discharged, and any other information required.

Other Responsibilities

- Make recommendations to the North Dakota State Auditor's Office, when appropriate, as it relates to selection, evaluation, and termination of independent auditors.
- Obtain the information and training needed to enhance the committee members' understanding of the role of Internal Audit and the independent auditor, the risk management process, internal controls, and a certain level of familiarity in financial reporting standards and processes so the Committee may adequately oversee.
- Serve as an open avenue of communication among the SIB, the RIO's management and Internal Audit, the independent auditors, and others.
- Serve as an appropriate confidential body for individuals to provide information on potentially fraudulent financial reporting or breaches of internal control.
- Inquire of management and Internal Audit regarding the procedures in place for the prevention of illegal payments, conflicts of interest, or other questionable practices.
- Perform other activities related to this charter as requested by the SIB.
- Institute and oversee special investigations as needed.
- Review any other reports the RIO issues that relates to the Committee's responsibilities.
- Review and assess the adequacy of the Committee charter annually, requesting the SIB approval for proposed changes.
- Confirm annually the review of all responsibilities outlined in this charter.

DATE OF CREATION OF COMMITTEE AMENDMENTS: December 14, 1993

DATE AUDIT COMMITTEE CHARTER ADOPTED AND APPROVED: June 24, 1994

REVISED: November 22, 1996, February 13, 1997, November 6, 2001, May 19, 2006,
May 18, 2007, June 26, 2009, May 27, 2016, January 25, 2019, November 22, 2019.

Executive Review and Compensation Committee Charter

I. PURPOSE

The Executive Review and Compensation Committee (“ERCC”) will assist the State Investment Board (SIB) to fulfill its responsibilities regarding matters that relate to “monitoring executive performance (which) is synonymous with monitoring organizational performance against board policies on *Ends* and *Executive Limitations*”. The ERCC will also assist the SIB in developing compensation goals and strategies for the agency as a whole that are in alignment with the strategic plan of the agency.

II. KEY RESPONSIBILITIES

The ERCC shall perform all duties as requested or required by the SIB. Specifically:

- Conduct a formal evaluation of the Executive Director annually prior to June 30th of each year;
- Obtain SIB approval of the annual performance evaluation of the Executive Director prior to June 30th of each year;
- Obtain performance survey’s of the Chief Investment Officer and Deputy Executive Director- Chief Retirement Officer prior to June 30th of each;
- Make a compensation recommendation for the Executive Director to the SIB on or before June 30th of each year;
- Administer a formal self-assessment of the SIB periodically (unless instructed otherwise);
- Review and make recommendations regarding RIO’s compensation policy to ensure RIO can recruit and retain superior talent to satisfy the core mission and strategic plan of the agency; and
- Conduct or procure a new peer compensation study or survey at least every three years to assess the current level of RIO staff compensation and recommend policy changes to address target salary ranges as appropriate.

The ERCC will conduct a formal evaluation of the Executive Director, and performance survey’s regarding the performance of the Chief Investment Officer, and Deputy Executive Director – Chief Retirement Officer during the first half of every calendar year. This formal evaluation by the ERCC will serve as the basis for an annual compensation recommendation for the Executive Director only to be reviewed and approved by the SIB on or before June 30th each year. The survey results for all three positions will be reported to both the SIB and TFFR Board.

III. ERCC COMPOSITION AND TERM LIMITS

The ERCC shall be composed of at least three SIB members as appointed by the SIB Chair at the first SIB meeting in July of each year or when a vacancy arises. This is a standing committee with no term limits. At least one committee member must be an elected or appointed official.

The Chief Financial Officer- Chief Operating Officer (CFO-COO) will be responsible for the preparation of all committee materials with the exception of internal survey and audit materials. Internal audit will be responsible for preparing an annual summary of the required reports submitted to the SIB by the Executive Director in connection with its review of policy adherence to *Ends* and *Executive Limitations*. Internal audit will assist the ERCC in completing annual surveys of the Executive Director and Chief Investment Officer with the SIB, SIB clients, and RIO team members, and Executive Director and Deputy Executive Director- Chief Retirement Officer with the TFFR Board, TFFR stakeholders, and RIO team members. Internal audit will also assist the SIB and ERCC in administering the annual board self-assessment process.

IV. MEETINGS

The ERCC must meet at least twice in the second half of the fiscal year, and hold additional meetings as needed, to fulfill its responsibilities as described in this Committee Charter and as called by the Committee Chair. At its first meeting after July the Committee will elect a Committee Chair and Vice-Chair.

V. AUTHORIZATION AND LIMITATIONS OF POWER

The ERCC is established by the SIB governance manual and has no power or authority to act on behalf of the full board. The ERCC will abide by the provisions in the governance manual that pertain to the meetings and actions of the Board.

GOVERNANCE & POLICY REVIEW COMMITTEE CHARTER

PURPOSE

The Governance & Policy Review Committee (“Committee”) will assist the State Investment Board (SIB) to fulfill its responsibilities regarding matters that relate to governing the SIB, policies, and identifying and making recommendations to the SIB.

KEY RESPONSIBILITIES

The Governance & Policy Review Committee shall perform all duties as requested or required by the SIB. The Governance & Policy Review Committee will specifically be responsible for the following duties and responsibilities:

1. Advise the SIB about operational strategies relevant to the SIB’s governance manual to strengthen the SIB and empower the Board members to meet its obligations related to sound governance principles and abide by the agency’s mission.
2. Advise the SIB about strategies that strive to increase the individual Board member effectiveness and their abilities to work collaboratively with their peers.
3. Review and make recommendations for policies for the governance manual that reflect best practices for overall good governance.
4. As directed by the board, review specific governance concerns and make recommendations for improvement.
5. Request Retirement and Investment Office staff for specific topic training and education for Board members. Make recommendations regarding an orientation process for newly appointed SIB members.

GOVERNANCE COMMITTEE COMPOSITION AND TERM LIMITS

The Governance Committee shall be composed of at least three members. They will be nominated and approved by a majority vote of the SIB. This is a standing committee with no term limits. The Executive Director will be responsible for meeting preparation.

MEETINGS

The Governance Committee will meet quarterly and hold additional meetings as needed to fulfill its responsibilities as described in this Committee Charter and as called by the Governance Committee Chair.

AUTHORIZATION AND LIMITATIONS OF POWER

The Governance Committee is established by the SIB governance manual and has no power or authority to act on behalf of the full board. The Governance Committee will abide by the provisions in the governance manual that pertain to the meetings and actions of the Board.

NORTH DAKOTA STATE INVESTMENT BOARD

INVESTMENT COMMITTEE CHARTER

The North Dakota State Investment Board Investment Committee (SIB Investment Committee), in conjunction with North Dakota Retirement and Investment Office management (RIO) and North Dakota State Investment Board (SIB), has developed the following policies and procedures relating to the prudent management of SIB assets.

COMMITTEE PURPOSE AND CHARTER

The Investment Committee (the “Committee”) is created to provide oversight of SIB investments within the parameters established by the SIB. Oversight will include an analysis of risk and return at the portfolio, asset class, and client fund levels. Additionally, the Committee will provide input to the Board on asset allocation and benchmark recommendations.

In general, the Committee will focus on various policies and procedures of the agency to ensure they are consistent with industry standards and that they continue to keep pace with prudent investment theory and practice.

The Committee will review decisions made about deviations from established benchmarks and allocation of investments among internal management (if approved) and external management, including decisions about passive, active and quantitative styles.

The Committee is responsible for (i) proposing to the SIB changes to its Investment Policy including delegation of investment authority to RIO investment staff; (ii) approving the SIB Investment Committee Investment Guidelines (IC Guidelines); (iii) approving the general strategies for each investment division; and (iv) approving new investment instruments. All investment guidelines must be consistent with the investment authority provided in North Dakota Century Code Chapter 21-10.

INVESTMENT COMMITTEE COMPOSITION AND TERM LIMITS

The Governance & Policy Review Committee shall be composed of two members of the SIB board, two external investment professionals and two RIO staff appointed by the SIB Chair. The SIB Chair will also appoint a Chair and a Vice Chair of the Committee. The two external investment professionals may be either currently active or retired and have substantial institutional investment experience.

Membership on the Committee will be for one year or termination of term on the SIB. Vacancies will be filled by the SIB at the first scheduled meeting following the vacancy. There will be no limit to the number of terms served on the Committee.

The Chief Investment Officer will be responsible for meeting preparation.

DUTIES AND RESPONSIBILITIES

- A.** The Committee will suggest and recommend changes to the SIB Investment Policy, as necessary including any delegation of authority to RIO investment staff.
- B.** The Committee will review periodically and approve changes and additions to the IC Guidelines and will report any revisions to the SIB.

- C. The Committee may examine internally (if approved) and externally managed portfolios, individual investments, correlation among portfolios, and such other matters as the Committee deems appropriate for the purpose of understanding, measuring, controlling, monitoring, and reporting SIB investment exposure.
- D. The Committee will review and approve the use of new investment instruments prior to their implementation in internal (if approved) and external SIB portfolios.
- E. The Committee will oversee the review and implementation of any other new investment programs or initiatives in all SIB portfolios and will coordinate any necessary related SIB approvals.
- F. For purposes of fulfilling its risk management and oversight responsibilities, the Committee will act as liaison between the RIO investment Staff and the SIB on issues concerning investment risk management.
- G. The Committee will review a subset of asset class strategies at least quarterly to assess established risk limits and evaluate strategy and will approve such strategies annually. The relevant Investment Staff shall be responsible for the specific investment decisions and implementations including internally (if approved) and externally managed mandates that are used to execute the approved strategies.
- H. The Committee will review all compliance-related issues including compliance with statutes, administrative rules, internal and external manager investment guidelines or as otherwise requested.
- I. The Committee will review asset allocation plans and strategies and will review and approve any proposed changes to SIB's strategic asset allocations and fund-level active risk objectives before they are presented to the Board for approval. The Committee will provide consultation and assistance to the SIB, ED and staff concerning total fund allocation changes or rebalance decisions, as needed.
- J. The Committee will review and act on all requests from investment managers, both internal (if approved) and external for waivers to provisions in their investment guidelines. On an emergency basis when it is impractical to timely convene a meeting of the Investment Committee, either the Chair or Vice Chair of the committee with the concurrence of the Chief Investment Officer of the Committee or the Executive Director, may approve a waiver. That waiver will be brought to the Committee for ratification at its next regularly scheduled meeting.
- K. The Committee may review and analyze other compliance-, risk- or derivative-related (if approved) matters that are directed to the attention of the Committee by the SIB, external auditors, the Internal Audit group, and RIO investment and accounting staff.
- L. The Committee will receive quarterly reports regarding transitions (if any) and shall review with the applicable Investment Staff the costs and impacts associated with the transitions. It will also from time-to-time review reports on the trading effectiveness of investment execution of internal investment strategies (if approved).
- M. The Committee will review annual benchmark recommendations from a Board- appointed benchmark consultant and will provide its evaluation and recommendation to the Board.
- N. The Committee will review and revise portfolio guidelines as necessary.
- O. The Committee will establish procedures for the methodology and frequency of review of (i) fund, asset class and portfolio performance, (ii) performance attribution, (iii) allocation within asset classes and (iv) risk levels. Procedures will be shared with the Board of Trustees.
- P. The Committee will conduct periodic round table discussions of the economic and investment environment.

GENERAL COMMITTEE PROCEDURES

- Q.** A majority of the voting members of the Committee constitute a quorum. A majority of a quorum is required to take any Committee action or approve any motion. If an approved motion lacked the support by the Committee Chair, the results of the vote shall be reported in a separate report to the Board of Trustees at its next regularly scheduled meeting. Any member proposing or responsible for oversight of an investment being brought to the Committee for approval will be recused from the vote.
- R.** The Committee shall establish a regular monthly meeting schedule. Non-routine meetings may be called by any Committee member with sufficient lead time to provide appropriate notice of The meeting.
- S.** The Committee Charter shall be approved by the SIB.
- T.** Minutes of Committee meetings shall be kept and be provided to SIB. Regular Board meetings shall include an agenda item for discussion of Committee actions and proceedings.
- U.** The Committee may establish standing subcommittees or temporary working groups to carry on assigned activities. Such subcommittees or working groups will report on their activities to the Committee as requested by the Committee.

DERIVATIVE INVESTMENTS

- V.** Procedures for review, processing, and monitoring of derivative investments (if approved) will be established by the Committee.
- W.** Specific investment policies regarding the use of derivative instruments (if approved) are determined for each portfolio by the IC Guidelines. Such policies, as amended from time to time, are officially contained in the IC Guidelines or external manager contracts.
- X.** The Chief Financial Officer or designee will review with the Committee any changes in the accounting treatment and required note disclosures for external reporting purposes used for derivative instruments, based on the applicable fund, the characteristics of the instrument and any underlying assets or liabilities.

CHARTER OF THE SECURITIES LITIGATION COMMITTEE OF THE NORTH DAKOTA STATE INVESTMENT BOARD

PURPOSE

The Securities Litigation Committee (the Committee) is a standing committee of the North Dakota State Investment Board (SIB) created to assist in fulfilling its fiduciary oversight responsibilities of monitoring the investment of assets entrusted to it by the various statutory and contracted funds, and to serve as a communications link for the SIB, RIO's management and staff, third party securities litigation firms, and others.

The Committee will determine when an active role should be pursued in regards to securities litigation affecting securities within the SIB's portfolios.

AUTHORITY

The Committee is authorized to:

- draft policy (to be formally approved by SIB) regarding dollar and/or risk thresholds for determining when to opt-out of class actions and/or seek direct litigation or lead plaintiff status;
- based on SIB approved policy, make decisions on the level of participation the SIB will take in direct litigation, opt-in or group litigation, anti-trust and other class actions; and
- approve the selection of special assistant attorneys in cases of direct litigation.

COMPOSITION

The Committee will consist of the Executive Director of RIO, one member of RIO fiscal or investment staff, RIO general counsel, and two members of the SIB appointed by the Chair.

Membership on the Committee will be for one year or termination of term on the SIB. Vacancies will be filled by the SIB Chair at the first scheduled meeting following the vacancy. There will be no limit to the number of terms served on the Committee.

The Committee will elect a Chair and a Vice Chair. The Chair will preside at all meetings of the Committee and serve as the liaison to the SIB. In the absence of the Chair, the Vice Chair will perform the duties of the Chair. The liaison will report at least four times a year to the SIB on the activities of the Committee and other pertinent information.

The Committee may form, and delegate authority to, subcommittees when it deems appropriate.

MEETINGS

The Committee will meet generally four times a year, with authority to convene additional meetings, as circumstances require or to adequately fulfill all the obligations and duties as outlined in this charter.

Meeting agendas will be prepared by the Executive Director and approved by the Committee Chair, unless otherwise directed by the Committee and will be provided to the Committee members along with briefing materials before the scheduled committee meeting.

Committee members are expected to attend each meeting, in person or via tele- or video-conference. RIO's executive management and others necessary to provide information and to conduct business will attend meetings. The Committee may invite staff of RIO or others to attend meetings, as necessary. The Committee may hold executive sessions as allowed under state law.

The Committee will act only on the affirmative vote of three of the committee members at a meeting. To conduct business, a quorum will be three members of the Committee. Should a quorum not be present before a scheduled meeting or during a meeting, the Chair will announce the absence of a quorum and the members will disburse. Meetings unable to transact business for lack of a quorum are not considered meetings. Meeting minutes will be prepared by RIO, or as otherwise directed by the Committee. Approved meeting minutes of the Committee will be submitted to the SIB.

RESPONSIBILITIES

RIO's management is responsible for ongoing monitoring of securities litigation and claims filing. Based on SIB approved policy guidelines, the Committee has the responsibility to provide oversight in the areas of:

- policy development
- determination on direct litigation and/or lead plaintiff status
- approval of special assistant attorneys (outside counsel)

To this end, the Committee will:

- Develop initial policy and periodically review policy to determine if changes are needed.
- Review reports from RIO staff and third parties in order to maintain awareness of potential and actual securities litigation affecting the SIB portfolios.
- Make decisions on whether to pursue direct litigation and/or lead plaintiff status on cases exceeding policy thresholds for passive participation.
- Select third party litigation firms when deemed appropriate.
- Perform other activities related to this charter as requested by the SIB.
- Review and assess the adequacy of the Committee charter annually, requesting the SIB approval for proposed changes.
- Confirm annually the review of all responsibilities outlined in this charter.

Reporting Responsibilities

- Report to the SIB about the Committee's activities, issues, and related recommendations.

- Provide a written report annually to the SIB, describing the Committee's composition, responsibilities and how they were discharged, and any other information required.

DATE OF CREATION OF COMMITTEE AMENDMENTS: February 16,2018

DATE AUDIT COMMITTEE CHARTER ADOPTED AND APPROVED: April 27,2018

I. CENTURY CODE

<u>SECTION</u>		<u>PAGE</u>
STATE INVESTMENT BOARD		
21-10-01.	State investment board - Membership -Term - Compensation -Advisory council.	1
21-10-02.	Board -Powers and duties.	1
21-10-02.1.	Board -Policies on investment goals and objectives and asset allocation.	1
21-10-03.	Cooperation with Bank of North Dakota.	2
21-10-04.	Board -Meetings.	2
21-10-05.	Investment director - Powers and duties.	2
21-10-06.	Funds under management of board - Accounts.	2
21-10-06.1.	Board - Investment reports.	3
21-10-06.2.	Investment costs.	3
21-10-07.	Legal investments.	3
21-10-08.	Reserves - Percentage limitations.	3
21-10-09.	Personal profit prohibited - Penalty.	3
21-10-10.	State investment board fund - Cost of operation of board.	3
21-10-11	Legacy and budget stabilization fund advisory board.	3
21-10-12	Legacy fund - Earnings defined.	4
STATE RETIREMENT AND INVESTMENT OFFICE		
54-52.5-01.	North Dakota State Retirement and Investment Office.	1
54-52.5-02.	Governing authority.	1
54-52.5-03.	State retirement and investment fund - Cost of operation of agency.	1



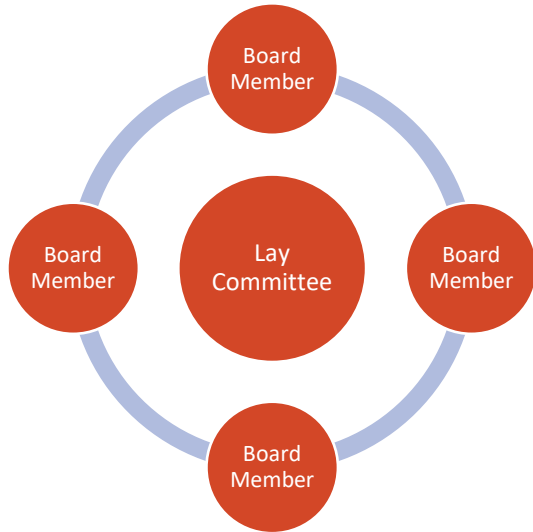
INVESTMENT COMMITTEE CHARTER

Scott M Anderson, CFA
October 7, 2022

NORTH
Dakota
Be Legendary.

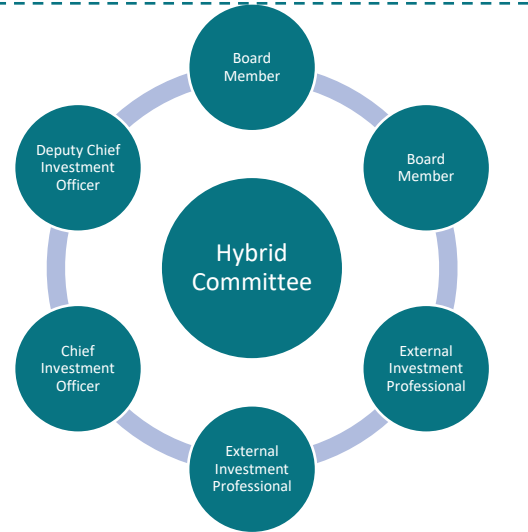
Retirement & Investment

THREE INVESTMENT COMMITTEE ARCHETYPES



- Operates like the board but can meet more frequently or more quickly
- Able to have focused and in-depth investment conversations
- Able to summarize for full board approval
- Lacks investment expertise
- Most investment decisions are at the board level with little delegation to staff

More Board Level



- Able to meet more frequently or more quickly
- Able to have focused and in-depth investment conversations
- Able to summarize for full board approval when necessary but also can delegate decisions to staff
- Staff participation enables delegation, quick decision and better implementation
- Outside and independent investment expertise
- Most investment decisions are at the investment committee or staff level

More Advisory



- Can meet more frequently or more quickly
- Able to have focused and in-depth investment conversations
- Able to summarize for full board approval
- Outside and independent investment expertise but need to ensure shared decision making
- Most investment decisions are at the board level
- Less delegation and associated benefits

PROPOSED INVESTMENT COMMITTEE COMPOSITION



- TWO BOARD MEMBERS, TWO EXTERNAL INVESTMENT PROFESSIONALS, TWO RIO STAFF
- NOMINATED AND APPROVED BY SIB BY A MAJORITY VOTE
- A CHAIR AND VICE-CHAIR WILL BE NOMINATED AND APPOINTED BY SIB
- EXTERNAL INVESTMENT PROFESSIONALS HAVE SUBSTANTIAL INSTITUTIONAL INVESTMENT EXPERIENCE
- ONE EXTERNAL PROFESSIONAL WITH TIES TO NORTH DAKOTA
- COMPENSATION FOR EXTERNAL COMMITTEE MEMBERS
- CHIEF INVESTMENT OFFICER RESPONSIBLE FOR MATERIAL PREPERATION

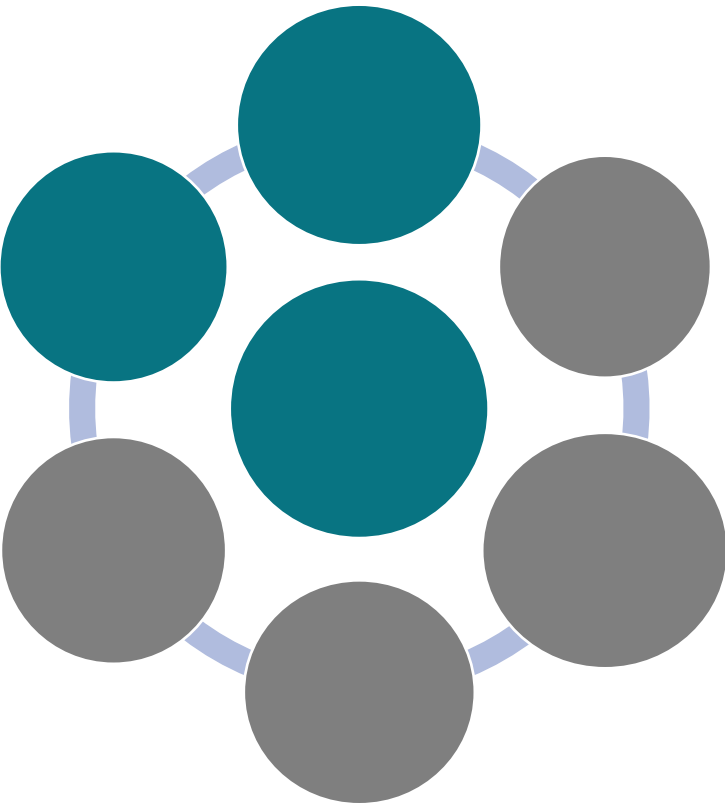
IMPORTANT CAPABILITIES/COMMITTEE KNOWLEDGE

- INVESTMENT STRATEGY
 - How investment philosophy, asset allocation, fund structure, talent management and operations influence results
- ASSET ALLOCATION
- PERFORMANCE MEASUREMENT AND MANAGEMENT
- RISK MANAGEMENT
- FUND OPERATIONS
- CHARACTERISTICS OF ASSET CLASSES AND INVESTMENT STRATEGIES
- INVESTMENT MANAGER SELECTION
- INVESTMENT TALENT MANAGEMENT
- INVESTMENT POLICY AND GUIDELINE DESIGN
- INVESTMENT FEE MANAGEMENT
- LIQUIDITY MANAGEMENT AND REBALANCING
- EXPOSURE MANAGEMENT

PROPOSED DUTIES AND RESPONSIBILITIES

- INVESTMENT STRATEGY
- ASSET ALLOCATION
- RISK AND RETURN AT THE CLIENT FUND, PORTFOLIO AND ASSET CLASS LEVEL
- POLICIES AND PROCEDURES DEVELOPMENT AND IMPLEMENTATION IN ACCORDANCE WITH INDUSTRY BEST PRACTICES
- PROPOSE POLICY CHANGES TO BOARD
- APPROVE INVESTMENT GUIDELINES, NEW INSTRUMENTS, INVESTMENT STRATEGIES
- EXAMINE PORTFOLIO CHARACTERISTICS AND STRATEGY EXECUTION
- COMPLIANCE AND WAIVERS
- INVESTMENT FEE MANAGEMENT
- TRANSITIONS
- BENCHMARKS
- INVESTMENT ENVIRONMENT

PROPOSED GENERAL PROCEDURES



- A MAJORITY OF VOTING MEMBERS OF THE COMMITTEE CONSTITUTE A QUORUM
- QUORUM REQUIRED TO TAKE ANY ACTION OR APPROVE A MOTION
- CHAIR MAY REPORT AN APPROVED MOTION TO THE BOARD IF THERE IS DISAGREEMENT
- A MEMBER PROPOSING OR RESPONSIBLE FOR OVERSIGHT OF IMPLIMENTATION WILL BE RECUSED FROM A VOTE
- REGULAR MONTHLY MEETINGS AND INTERIM MEETINGS WITH APPROPRIATE NOTICE
- INVESTMENT COMMITTEE CHARTER REVIEWED ANNUALLY AND APPROVED BY THE SIB
- MEETING MINUTES KEPT, PROVIDED TO, AND PRESENTED TO THE SIB
- THE COMMITTEE MAY ESTABLISH STANDING SUB-COMMITTEES OR WORKING GROUPS THAT REPORT TO THE COMMITTEE

TYPICAL INVESTMENT COMMITTEE CONTENT



ONCE
PER YEAR

- OBJECTIVES
- PHILOSOPHY
- METHODOLOGIES
- ORGANIZATION
- TOOLS AND MODELS
- CAPABILITY DEVELOPMENT
- PERFORMANCE TARGETS
- FINANCIAL CHARACTERISTICS
- INSTRUMENTS



~THREE
TIMES
PER YEAR

- ABSOLUTE RISK AND PERFORMANCE
- ACTIVE RETURN/RISK ATTRIBUTION
- CONTRIBUTION TO FUND PERFORMANCE
- CHANGES IN TEAM/OWNERSHIP
- COMPLIANCE
- GUIDELINE CHANGES
- NEW PROGRAMS/MANDATES/STRATEGIES
- ASSET ALLOCATIONS
- TRANSITIONS
- MARKET ENVIRONMENT
- APPROVALS FOR NEW IMPLEMENTATIONS

PROPOSED TYPICAL INVESTMENT COMMITTEE AGENDA

OPEN SESSION

APPROVAL OF MINUTES

STANDARD BUSINESS

REVIEW AN INVESTMENT CLASS, ASSET ALLOCATION OR STRATEGY

CLOSED SESSION*

CLOSED SESSION ACTIVITIES

RECONVENE IN OPEN SESSION

RISK DISCUSSION

FUTURE MEETING TOPICS

MOTION TO ADJORN

INTERACTION WITH THE BOARD

- THE INVESTMENT COMMITTEE PROPOSES POLICY CHANGES INCLUDING DELEGATION OF AUTHORITY TO THE BOARD
- BOARD IS FINAL APPROVAL FOR ASSET ALLOCATIONS
- BOARD REVIEWS SUMMARIZED STRATEGIES AND PERFORMANCE PERIODICALLY
- BOARD RECEIVES AN INDEPENDENT PERFORMANCE AND RISK ASSESSMENT FROM EXTERNAL INDEPENDENT THIRD PARTY
- INVESTMENT COMMITTEE REVIEWS AGENDAS AND SUMMARIZED PROCEEDINGS OF INVESTMENT COMMITTEE
- BOARD MAY REQUIRE DECISIONS BE BROUGHT TO THE FULL BOARD

North Dakota State Investment Board Committee Charter

The North Dakota State Investment Board Investment Committee (SIB Investment Committee), in conjunction with North Dakota Retirement and Investment Office management (RIO) and North Dakota State Investment Board (SIB), has developed the following policies and procedures relating to the prudent management of SIB assets.

COMMITTEE PURPOSE AND CHARTER

The Investment Committee (the "Committee") is created to provide oversight of SIB investments within the parameters established by the SIB. Oversight will include an analysis of risk and return at the portfolio, asset class, and client fund levels. Additionally, the Committee will provide input to the Board on asset allocation and benchmark recommendations.

In general, the Committee will focus on various policies and procedures of the agency to ensure they are consistent with industry standards and that they continue to keep pace with prudent investment theory and practice.

The Committee will review decisions made about deviations from established benchmarks and allocation of investments among internal management (if approved) and external management, including decisions about passive, active and quantitative styles.

The Committee is responsible for (i) proposing to the SIB changes to its Investment Policy including delegation of investment authority to RIO investment staff; (ii) approving the SIB Investment Committee Investment Guidelines (IC Guidelines); (iii) approving the general strategies for each investment division; and (iv) approving new investment instruments. All investment guidelines must be consistent with the investment authority provided in North Dakota Century Code Chapter 21-10.

INVESTMENT COMMITTEE COMPOSITION AND TERM LIMITS

The Investment Committee shall be composed of two members of the SIB board, two external investment professionals and two RIO staff appointed by the SIB Chair. The SIB Chair will also appoint a Chair and a Vice Chair of the Committee. The two external investment professionals may be either currently active or retired and have substantial institutional investment experience.

Membership on the Committee will be for one year or termination of term on the SIB. Vacancies will be filled by the SIB at the first scheduled meeting following the vacancy. There will be no limit to the number of terms served on the Committee.

The Chief Investment Officer will be responsible for meeting preparation.

DUTIES AND RESPONSIBILITIES

- A. The Committee will suggest and recommend changes to the SIB Investment Policy, as necessary including any delegation of authority to RIO investment staff.
- B. The Committee will review periodically and approve changes and additions to the IC Guidelines and will report any revisions to the SIB.
- C. The Committee may examine internally (if approved) and externally managed portfolios, individual investments, correlation among portfolios, and such other matters as the Committee deems appropriate for the purpose of understanding, measuring, controlling, monitoring, and reporting SIB investment exposure.
- D. The Committee will review and approve the use of new investment instruments prior to their implementation in internal (if approved) and external SIB portfolios.
- E. The Committee will oversee the review and implementation of any other new investment programs or initiatives in all SIB portfolios and will coordinate any necessary related SIB approvals.
- F. For purposes of fulfilling its risk management and oversight responsibilities, the Committee will act as liaison between the RIO investment Staff and the SIB on issues concerning investment risk management.
- G. The Committee will review a subset of asset class strategies at least quarterly to assess established risk limits and evaluate strategy and will approve such strategies annually. The relevant Investment Staff shall be responsible for the specific investment decisions and implementations including internally (if approved) and externally managed mandates that are used to execute the approved strategies.
- H. The Committee will review all compliance-related issues including compliance with statutes, administrative rules, internal and external manager investment guidelines or as otherwise requested.
- I. The Committee will review asset allocation plans and strategies and will review and approve any proposed changes to SIB's strategic asset allocations and fund-level active risk objectives before they are presented to the Board for approval. The Committee will provide consultation and assistance to the SIB, ED and staff

concerning total fund allocation changes or rebalance decisions, as needed.

- J.** The Committee will review and act on all requests from investment managers, both internal (if approved) and external for waivers to provisions in their investment guidelines. On an emergency basis when it is impractical to timely convene a meeting of the Investment Committee, either the Chair or Vice Chair of the committee with the concurrence of the Chief Investment Officer of the Committee or the Executive Director, may approve a waiver. That waiver will be brought to the Committee for ratification at its next regularly scheduled meeting.
- K.** The Committee may review and analyze other compliance-, risk- or derivative-related (if approved) matters that are directed to the attention of the Committee by the SIB, external auditors, the Internal Audit group, and RIO investment and accounting staff.
- L.** The Committee will receive quarterly reports regarding transitions (if any) and shall review with the applicable Investment Staff the costs and impacts associated with the transitions. It will also from time-to-time review reports on the trading effectiveness of investment execution of internal investment strategies (if approved).
- M.** The Committee will review annual benchmark recommendations from a Board-appointed benchmark consultant and will provide its evaluation and recommendation to the Board.
- N.** The Committee will review and revise portfolio guidelines as necessary.
- O.** The Committee will establish procedures for the methodology and frequency of review of (i) fund, asset class and portfolio performance, (ii) performance attribution, (iii) allocation within asset classes and (iv) risk levels. Procedures will be shared with the Board of Trustees.
- P.** The Committee will conduct periodic round table discussions of the economic and investment environment.

GENERAL COMMITTEE PROCEDURES

- Q.** A majority of the voting members of the Committee constitute a quorum. A majority of a quorum is required to take any Committee action or approve any

motion. If an approved motion lacked the support by the Committee Chair, the results of the vote shall be reported in a separate report to the Board of Trustees at its next regularly scheduled meeting. Any member proposing or responsible for oversight of an investment being brought to the Committee for approval will be recused from the vote.

- R. The Committee shall establish a regular monthly meeting schedule. Non-routine meetings may be called by any Committee member with sufficient lead time to provide appropriate notice of the meeting under ...
- S. The Committee Charter shall be approved by the SIB.
- T. Minutes of Committee meetings shall be kept and be provided to SIB. Regular Board meetings shall include an agenda item for discussion of Committee actions and proceedings.
- U. The Committee may establish standing subcommittees or temporary working groups to carry on assigned activities. Such subcommittees or working groups will report on their activities to the Committee as requested by the Committee.

DERIVATIVE INVESTMENTS

- V. Procedures for review, processing, and monitoring of derivative investments (if approved) will be established by the Committee.
- W. Specific investment policies regarding the use of derivative instruments (if approved) are determined for each portfolio by the IC Guidelines. Such policies, as amended from time to time, are officially contained in the IC Guidelines or external manager contracts.
- X. The Chief Financial Officer or designee will review with the Committee any changes in the accounting treatment and required note disclosures for external reporting purposes used for derivative instruments, based on the applicable fund, the characteristics of the instrument and any underlying assets or liabilities.



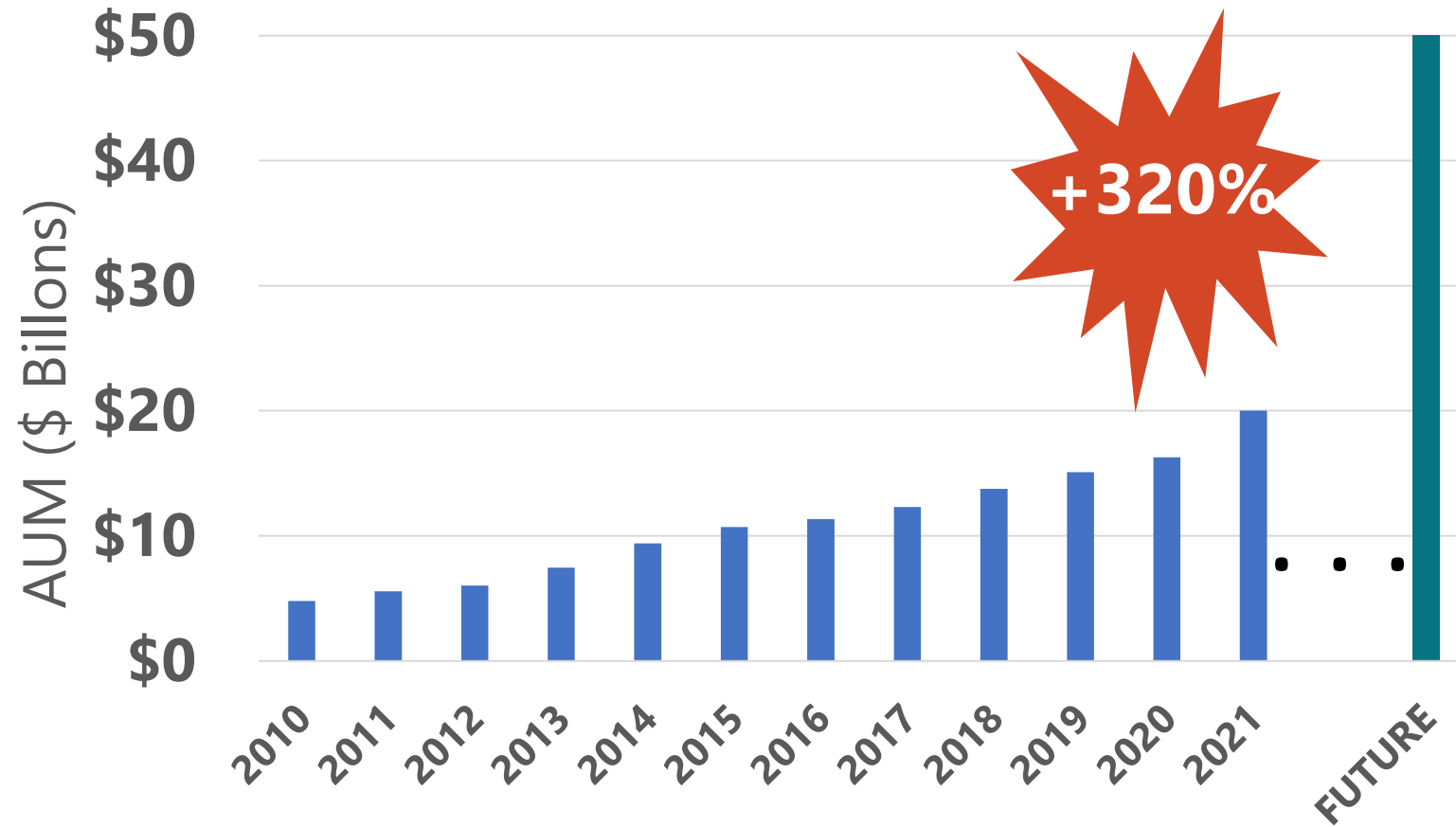
ACTIVITIES TO DATE

Scott M Anderson, CFA
October 7, 2022

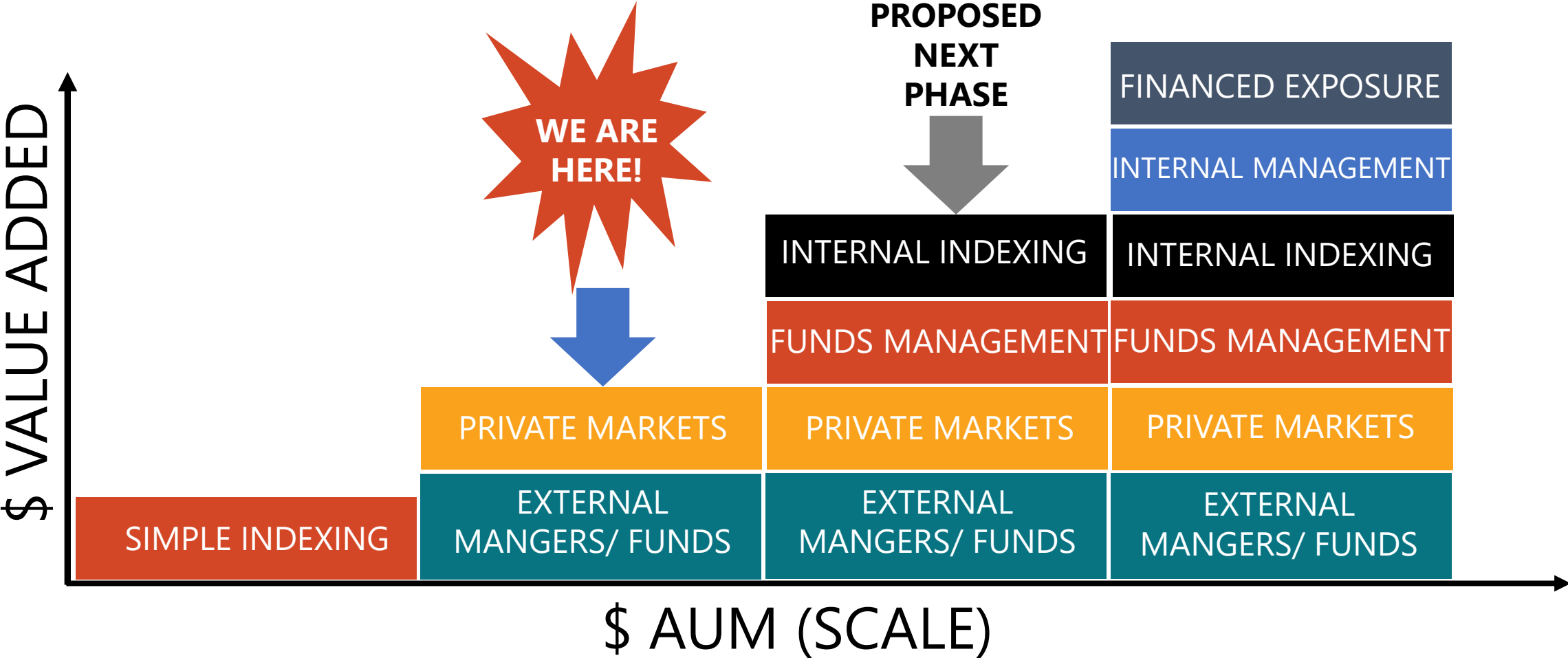
NORTH
Dakota
Be Legendary.

Retirement & Investment

ASSETS UNDER MANAGEMENT GROWTH



OPPORTUNITY



NECESSARY CAPABILITIES FOR SUCCESS

GOVERNANCE

A GOVERNANCE HIERARCHY INCLUDING A STAFF RUN INVESTMENT COMMITTEE WITH SOME DELEGATION AS WELL AS BOARD LEVEL INVESTMENT EXPERTISE

TALENT MANAGEMENT

SPECIFIC INVESTMENT ROLE RECOGNITION AS WELL AS A TOTAL REWARDS PACKAGE THAT IS COMPETITIVE WITH SIMILAR INVESTMENT ORGANIZATIONS

OPERATIONS

APPROPRIATE STAFFING AND SKILLS OR OUTSOURCING OF CRITICAL INVESTMENT ACCOUNTING, TRANSACTION PROCESSING, AND ENTERPRISE RISK CAPABILITIES

DATA AND TECHNOLOGY INFRASTRUCTURE

HIGH FREQUENCY AND HIGH-QUALITY DATA AS WELL AS INFRASTRUCTURE TO SUPPORT DATA THROUGHPUT AND PROCESSING SPEEDS

RESEARCH AND KNOWLEDGE MANAGEMENT

A CULTURE OF RESEARCH, LEARNING, CREATIVITY AND KNOWLEDGE MANAGEMENT SUPPORTED BY EXPECTATIONS, RESOURCES, AND RECOGNITION

ACTIVITIES TO ENABLE CAPABILITIES YTD

NORTH
Dakota

Be Legendary.™

GOVERNANCE

GOVERNANCE COMMITTEE/INVESTMENT COMMITTEE FORMATION, COMPENSATION ROLE OF EXECUTIVE REVIEW COMMITTEE, AUDIT CONSULTANT, RISK MANAGEMENT PROGRAM

TALENT MANAGEMENT

HIRE FOUR NEW ROLES, DEVELOP TALENT MANAGEMENT PLAN, IDENTIFY POTENTIAL ORGANIZATION STRUCTURES

OPERATIONS

ALLOCATION/UNITIZATION, CONSOLIDATE POOLED ALLOCATIONS /SUB-ASSET ALLOCATIONS, INCREASED COLLABORATION ACROSS OPERATIONS AND INVESTMENTS, STRUCTURE SUB-ASSET FUNDS FOR MORE ADVANCED FUNDS MANAGEMENT/INTERNAL MANAGEMENT

DATA AND TECHNOLOGY INFRASTRUCTURE

IMPLEMENT RISK SYSTEM, NORTHERN TRUST – ALLOCATION /UNITIZATION, VENN, PERFORMANCE, PRIVATE MARKET DATA

RESEARCH AND KNOWLEDGE MANAGEMENT

COMPREHENSIVE PORTFOLIO REVIEW AND TALENT MANAGEMENT WILL LEAD TO DEVELOPMENT OF METHODOLOGY, RESEARCH AND KNOWLEDGE MANAGEMENT AGENDA

LEGISLATIVE ACTIVITIES

SCALE

Decision for: SIB,
Client Funds, Legislature

LAND TRUST MANAGED BY RETIREMENT AND INVESTMENT OFFICE (ACCELERATES BENEFIT REALIZATION); LEGACY FUND INSTATE INVESTMENT PROPOSALS (ENDOWMENT STRUCTURE ENABLES MORE EFFICIENT AND SCALABLE RETURNS ACROSS ALL CLIENT FUNDS)

GOVERNANCE

Decision for Legislature

COMPOSITION OF SIB BOARD (BETTER REFLECTS CLIENT FUND REPRESENTATION)

TALENT MANAGEMENT

Decision for SIB,
Legislature

EXPAND STAFF FOR INTERNAL MANAGEMENT AND INVESTMENT OPERATIONS; HAVE INVESTMENT ROLE CLASSIFICATION AND COMPENSATION SYSTEM; PROVIDE FOR AN INVESTMENT INCENTIVE COMPENSATION SYSTEM THAT IS FUNDED ON A CONTINUING BASIS. (Ex: OHIO, WISCONSIN, SOUTH DAKOTA, NORTH CAROLINA)

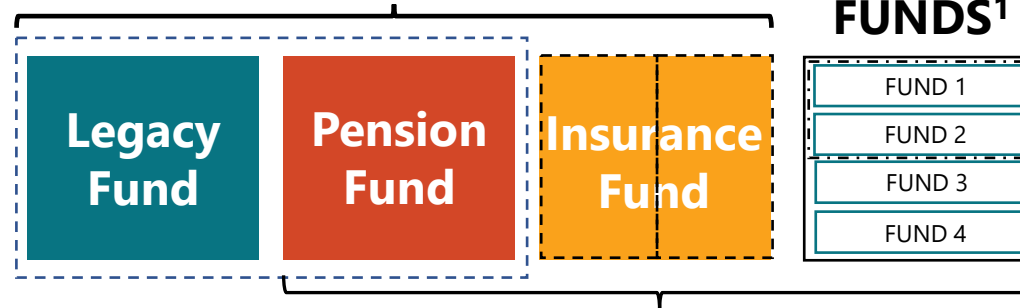
FUND LEVEL OPPORTUNITY

27 DIFFERENT ASSET ALLOCATIONS

FUND 1
FUND 2
FUND 3
FUND 4
FUND 5
FUND 6
FUND 7
FUND 8
FUND 9
FUND 10
FUND 11
FUND 12
FUND 13
FUND 14
FUND 15
FUND 16
FUND 17
FUND 18
FUND 19
FUND 20
FUND 21
FUND 22
FUND 23
FUND 24
FUND 25
FUND 26
FUND 27



POTENTIAL FOR POOLING



TWO OR THREE FUND SEPARATION ENABLES POTENTIAL FOR LIABILITY AWARE PORTFOLIOS

- **SCALE**
- **REDUCED OPERATIONAL COMPLEXITY**
- **IMPLEMENTATION TIME SAVINGS**
- **FEWER ALLOCATIONS**

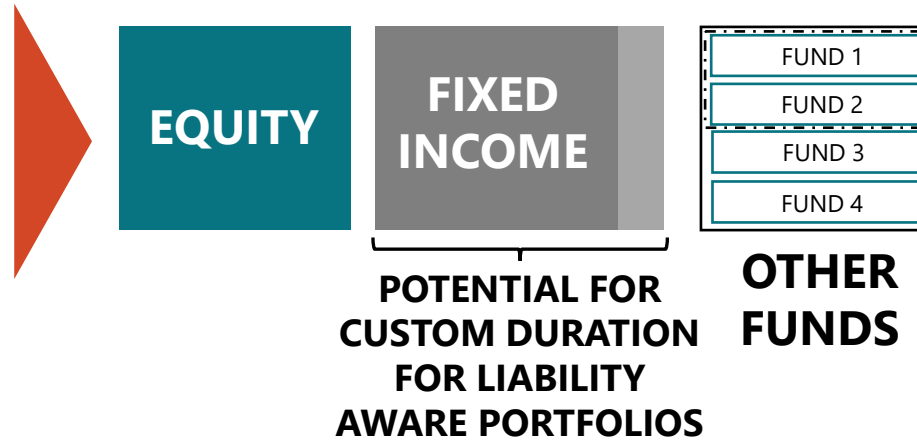
IMPLEMENTATION OPPORTUNITY

27 DIFFERENT SUB-ASSET CLASS IMPLEMENTATIONS

VARIATION BY MANAGERS, SUB-ASSET CLASS BENCHMARKS AND WEIGHTS

Fixed Income	Equity
FUND 1	FUND 1
FUND 2	FUND 2
FUND 3	FUND 3
FUND 4	FUND 4
FUND 5	FUND 5
FUND 6	FUND 6
FUND 7	FUND 7
FUND 8	FUND 8
FUND 9	FUND 9
FUND 10	FUND 10
FUND 11	FUND 11
FUND 12	FUND 12
FUND 13	FUND 13
FUND 14	FUND 14
FUND 15	FUND 15
FUND 16	FUND 16
FUND 17	FUND 17
FUND 18	FUND 18
FUND 19	FUND 19
FUND 20	FUND 20
FUND 21	
FUND 22	
FUND 23	
FUND 24	
FUND 25	
FUND 26	
FUND 27	

POTENTIAL FOR FEWER SUB-ASSET IMPLEMENTATIONS



- BETTER SCALE ADVANTAGES
- FEWER MANAGER SEARCHES
- OPTIMAL ACTIVE RISK/RETURN
- REDUCED OPERATIONAL COMPLEXITY
- ADDITIONAL IMPLEMENTATION TIME SAVINGS
- EASIER TO MONITOR & MANAGE
- MANAGED CONCENTRATION RISK

CLIENT PORTFOLIO EQUITY WEIGHTS

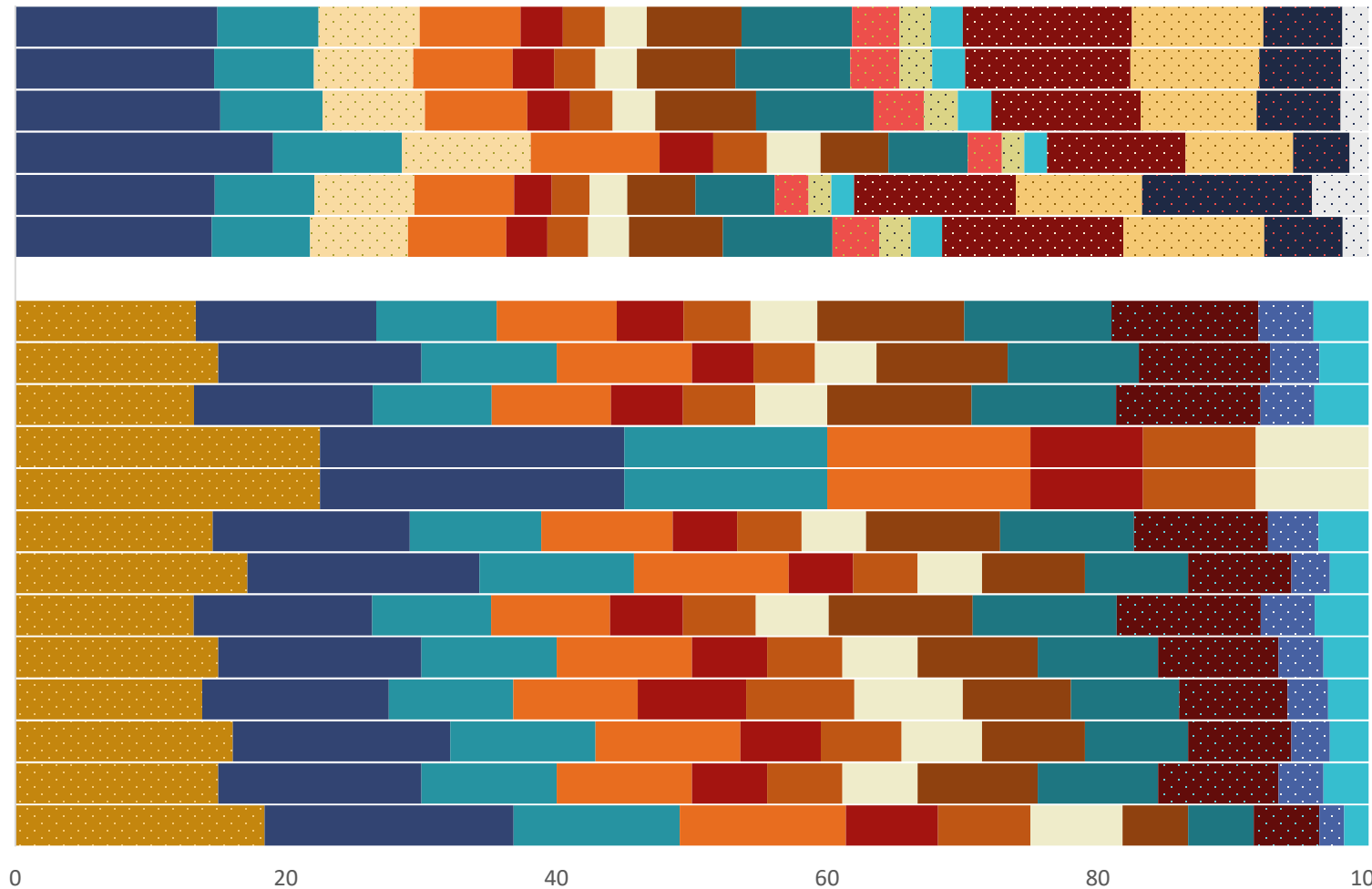
 PATTERN INDICATES MGR IS IN SOME BUT NOT ALL PORTFOLIOS

Pension

TFFR
Bismarck Police
PERS
Grand Forks Employees
Grand Forks Park District
Bismarck Employees

Insurance & Legacy Fund

Board of Medicine
WSI
Veteran's Cemetery
Risk Management WC
Risk Management
Parks & Rec
ND Association of Counties
Legacy Fund
Regulatory Trust Fund
FargoDome
Fire & Tornado
Deferred Sick Leave
Cultural






Portfolio Weight (%)








Domestic Large Cap

-  LSV Large Cap Value
-  LA Capital Large Cap Growth
-  LA Capital Large Cap Enhanced
-  NTAM Quant Enhanced S&P 500
-  Parametric Enhanced S&P 500



Domestic Small Cap

-  Sycamore Small Cap Value
-  Riverbridge Small Cap Growth
-  Atlanta Capital Small Cap Equity Fund



International

-  William Blair International Leaders
-  Arrowstreet International Equity
-  LSV International Large Cap Value
-  NTAM MSCI World ex-US Index
-  Wellington Intl Small Cap Opportunities
-  Vanguard Intl Explorer Fund
-  DFA International Small Cap Value

Global

-  LSV Global Value Equity
-  Epoch Global Choice

Emerging Markets

-  Axiom Emerging Markets Equity Fund
-  DFA Emerging Markets Small Cap Portfolio

PORTFOLIO REVIEW

-will complete a portfolio review in the coming months to identify opportunities

Across Client Funds, Asset Classes, Sub-asset Classes and Managers

Asset Allocation

- What are the funds' purposes?
- What are the risk and return objectives?
- What benchmarks were used in developing the asset allocations?

Policy Statement/ Guidelines

- What are the portfolio expectations?
- What are the risk control constraints?
- What are the portfolio composition constraints?

Benchmarks

- What benchmarks are being used?
- What are the benchmark weights?
- What are the rebalancing rules?

Manager Selection

- What are the managers' benchmark?
- What are the managers' investment philosophies?
- What are risk characteristics of the investment managers' style of investing?
- How do the managers perform in a range of risk environments?

PHASE

ACTIVITIES

1.0

SUB-ASSET STRUCTURE

- INDEXING FOR LIQUIDITY, TRACKING ERROR CONTROL, AND REBALANCING
- CONSISTENT SUB-ASSET ALLOCATIONS AND ASSET ALLOCATION POOLS ACROSS FUNDS BASED ON MARKET REPRESENTATIVE UNIVERSES AND BENCHMARKS
- MANGER'S MANDATES RISK ALIGNED TO ASSET ALLOCATION AND TO MANAGE RISK

2.0

SUB-ASSET OPTIMIZATION

- FIND OPTIMAL POOL OF MANAGERS FOR SUB-ASSET ACTIVE RETURN AND RISK GOALS
- CONSTRUCT OPTIMAL WEIGHTING OF MANAGER MANDATES

3.0

ADVANCED FUNDS MANAGEMENT

- OFFSET SUB-ASSET EXPOSURES TO OPTIMIZE ACTIVE RETURN/RISK
- MANAGE LIQUIDITY, REBALANCING AND EXPOSURES WITH INDEX FUNDS